



Summary report

TASMAN REGION

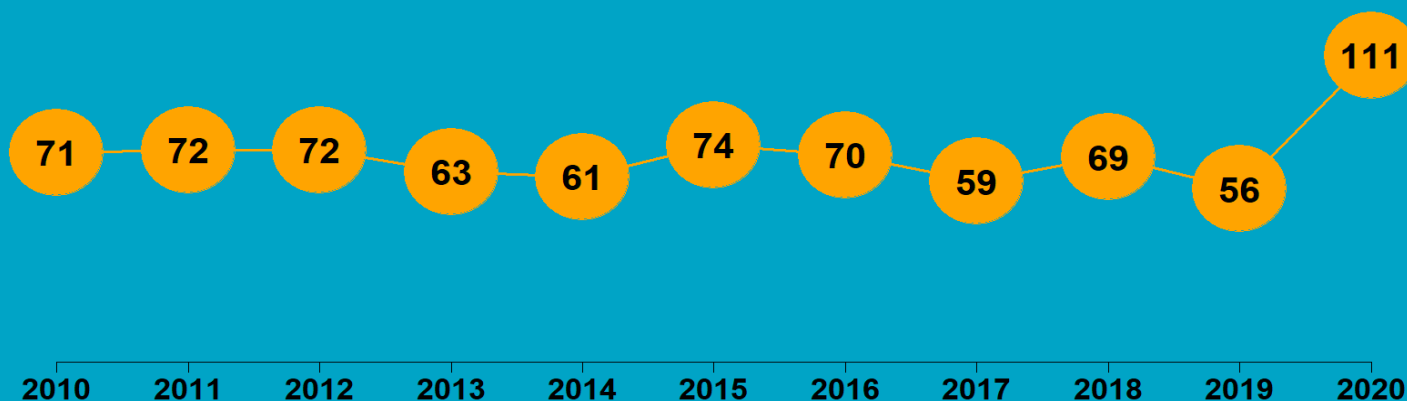
2020

State of NZ Garden Birds

Te Āhua o ngā Manu o te Kāri i Aotearoa



NUMBER OF SURVEYED GARDENS



Manaaki
Whenua
Landcare
Research

We have estimated how bird counts have changed over the last 10– and 5–year periods in different regions, districts, and neighbourhoods across New Zealand for 14 common garden visitors – five native and nine introduced birds.

Thanks to all our volunteer bird counters, 39,994 garden surveys have been completed nationwide since 2010. We use specialised statistical tools to account for variation in sampling effort between regions, districts, and suburbs over time. We also account for variation in bird counts depending on whether the surveyed gardens were in a rural or urban setting, and whether birds were fed or not. We also correct for the actual number of gardens in each area.

We then classify these changes according to their direction and size (see diagram below) to help us identify changes of potential concern or interest.

How have bird counts changed?

Drawing attention to changes in counts that may be of concern or interest

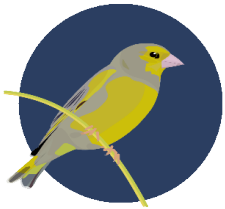


TASMAN | Greenfinch

How have garden bird counts changed in this region?



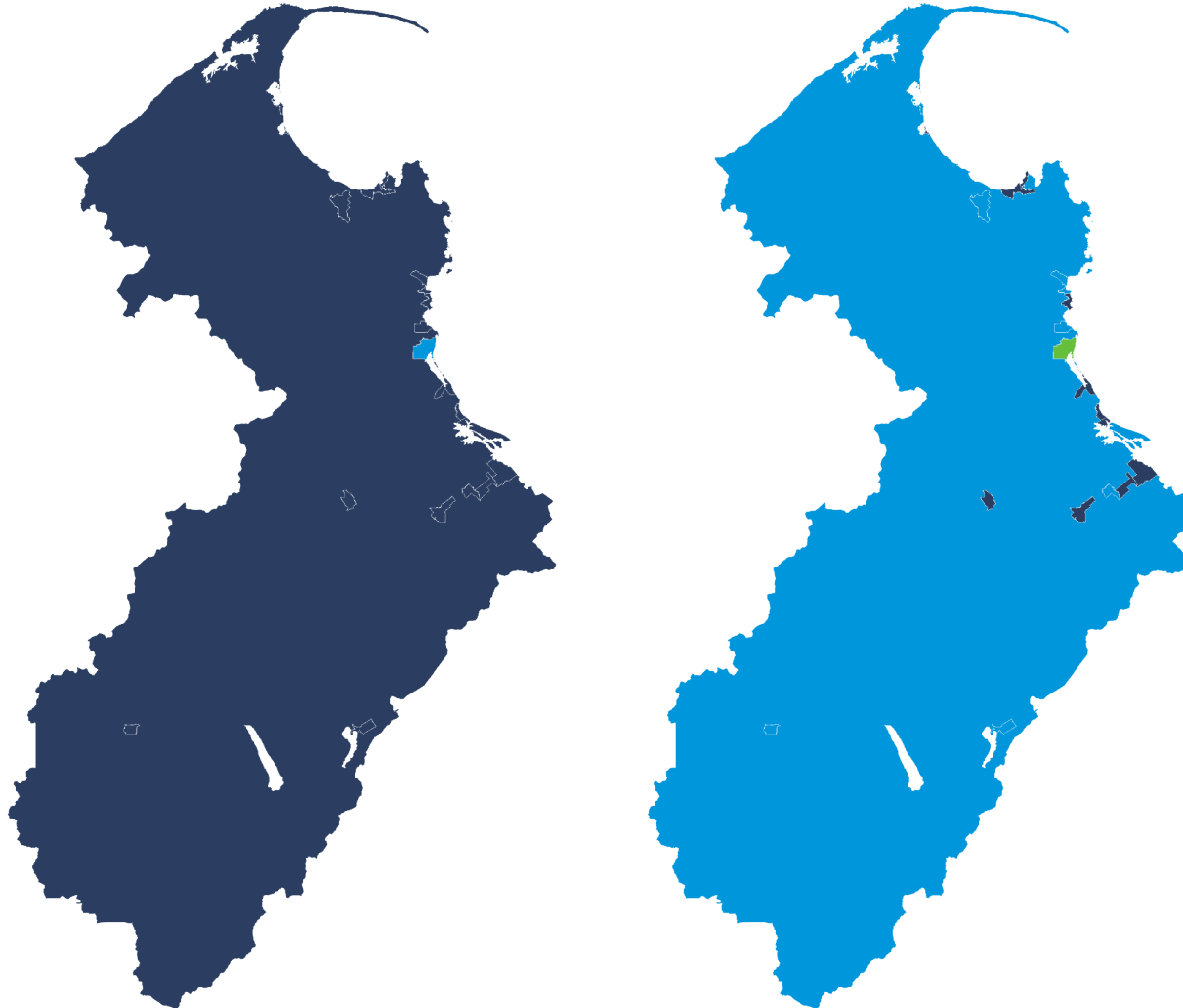
Last 10 years
2010–20



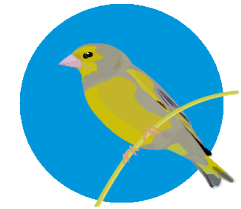
**RAPID INCREASE
REGIONALLY**



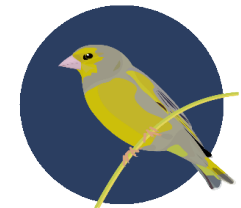
**MODERATE INCREASE
NATIONALLY**



Last 5 years
2015–20



**MODERATE INCREASE
REGIONALLY**



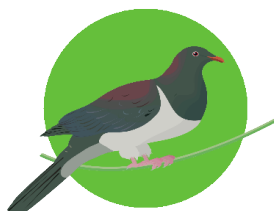
**RAPID INCREASE
NATIONALLY**

TASMAN | Kererū | Kererū

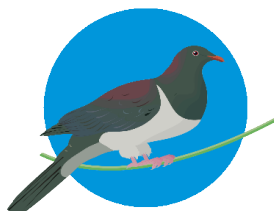
How have garden bird counts changed in this region?



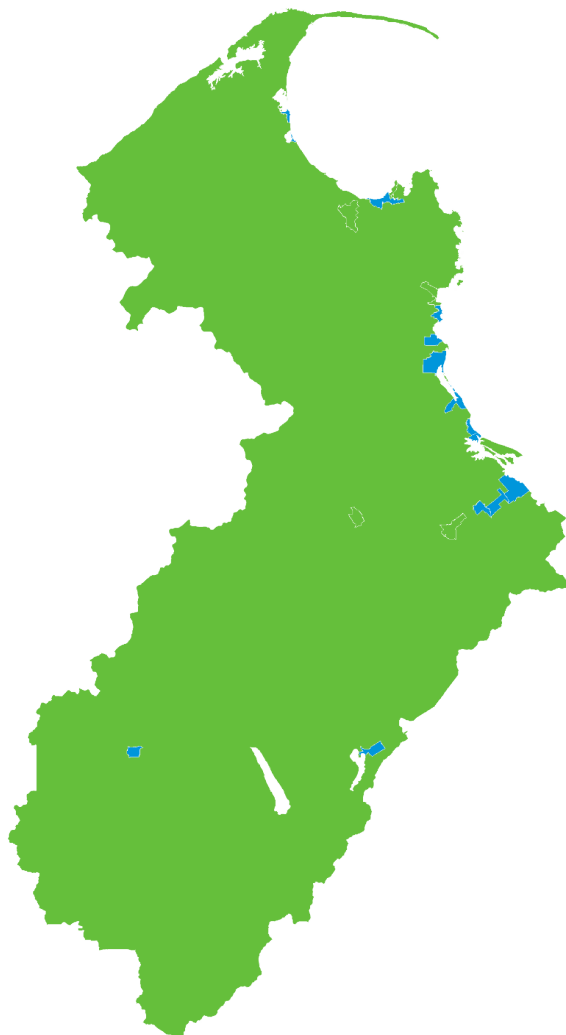
Last 10 years
2010–20



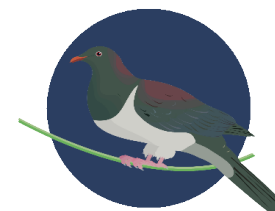
**SHALLOW INCREASE
REGIONALLY**



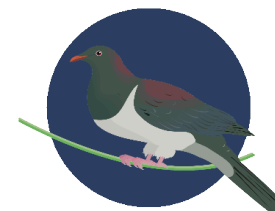
**MODERATE INCREASE
NATIONALLY**



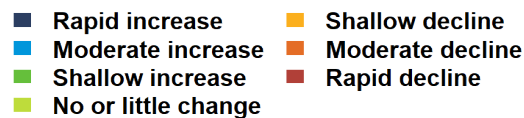
Last 5 years
2015–20



**RAPID INCREASE
REGIONALLY**



**RAPID INCREASE
NATIONALLY**



TASMAN | Starling | Tāringi

How have garden bird counts changed in this region?



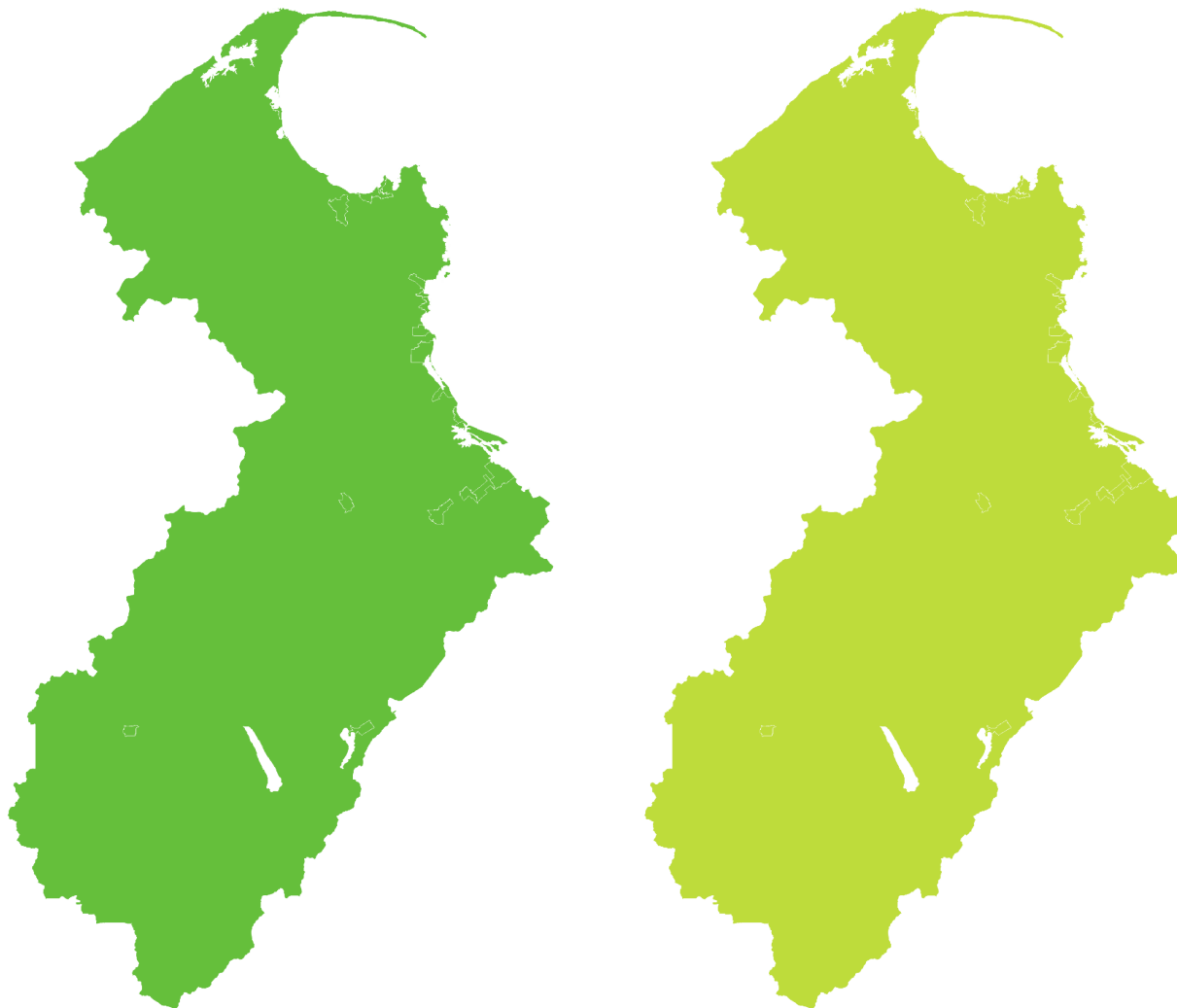
Last 10 years
2010–20



SHALLOW INCREASE
REGIONALLY



MODERATE DECLINE
NATIONALLY



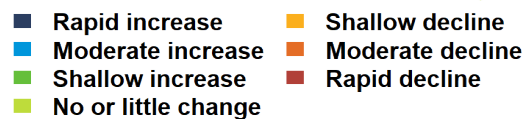
Last 5 years
2015–20



LITTLE OR NO CHANGE
REGIONALLY



SHALLOW DECLINE
NATIONALLY



TASMAN | Goldfinch

How have garden bird counts changed in this region?



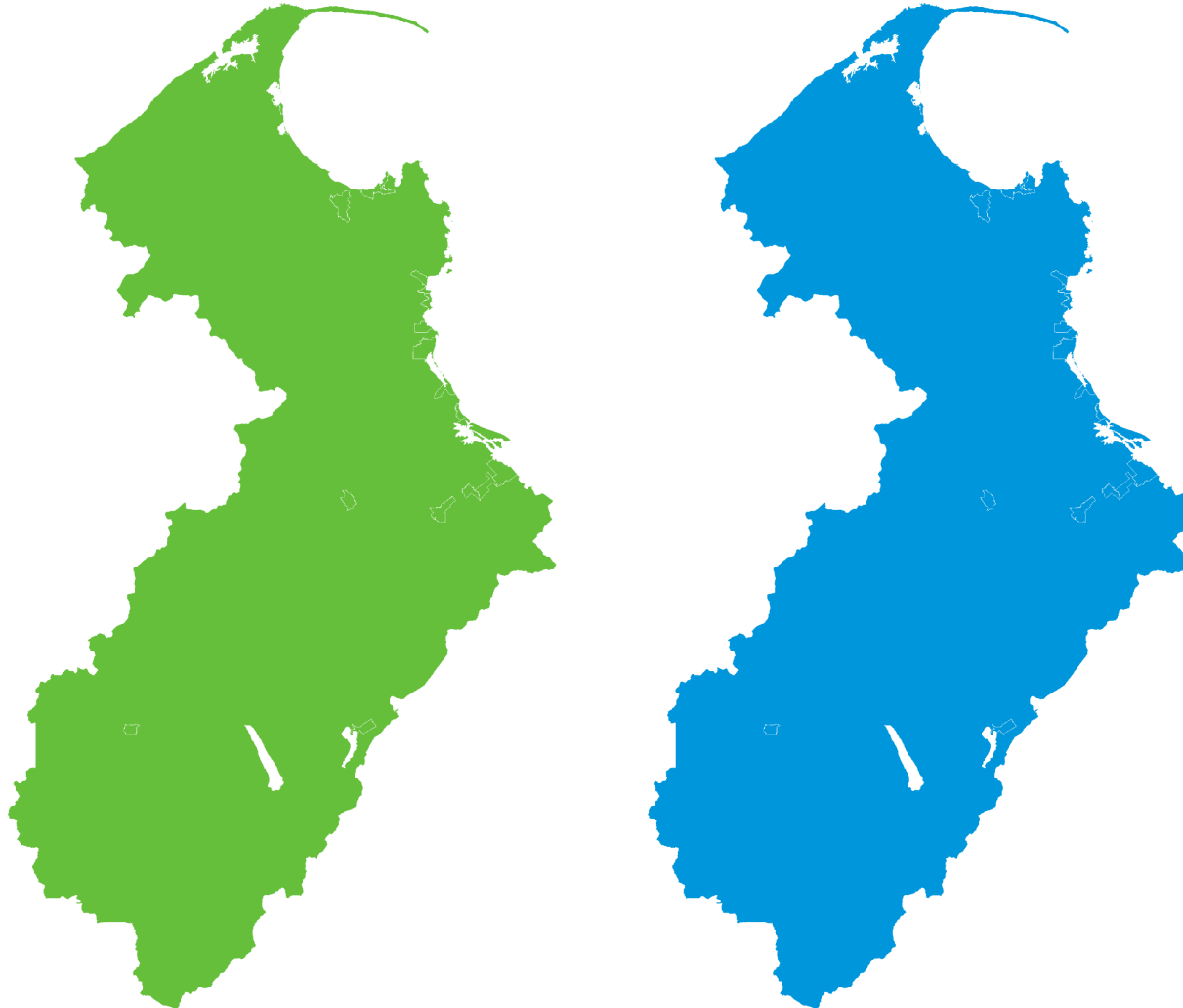
Last 10 years
2010–20










SHALLOW INCREASE
REGIONALLY



SHALLOW INCREASE
NATIONALLY



 Rapid increase	 Shallow decline
 Moderate increase	 Moderate decline
 Shallow increase	 Rapid decline
 No or little change	

Last 5 years
2015–20



MODERATE INCREASE
REGIONALLY



MODERATE INCREASE
NATIONALLY

TASMAN | Fantail | Pīwaiwaka

How have garden bird counts changed in this region?



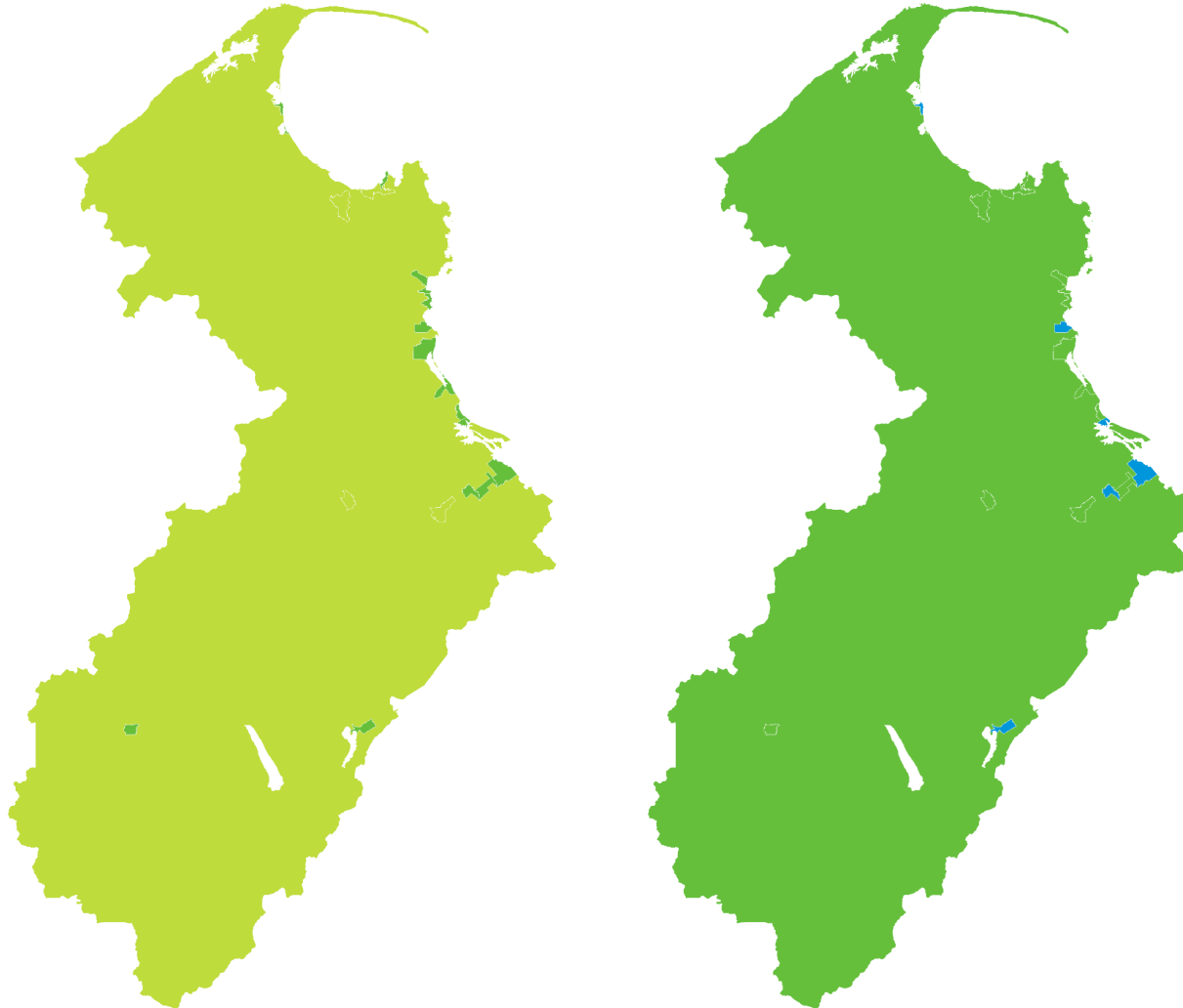
Last 10 years
2010–20



SHALLOW INCREASE
REGIONALLY



SHALLOW INCREASE
NATIONALLY



■ Rapid increase	■ Shallow decline
■ Moderate increase	■ Moderate decline
■ Shallow increase	■ Rapid decline
■ No or little change	

Last 5 years
2015–20



SHALLOW INCREASE
REGIONALLY



RAPID INCREASE
NATIONALLY

TASMAN | Tūī | Kōkō

How have garden bird counts changed in this region?



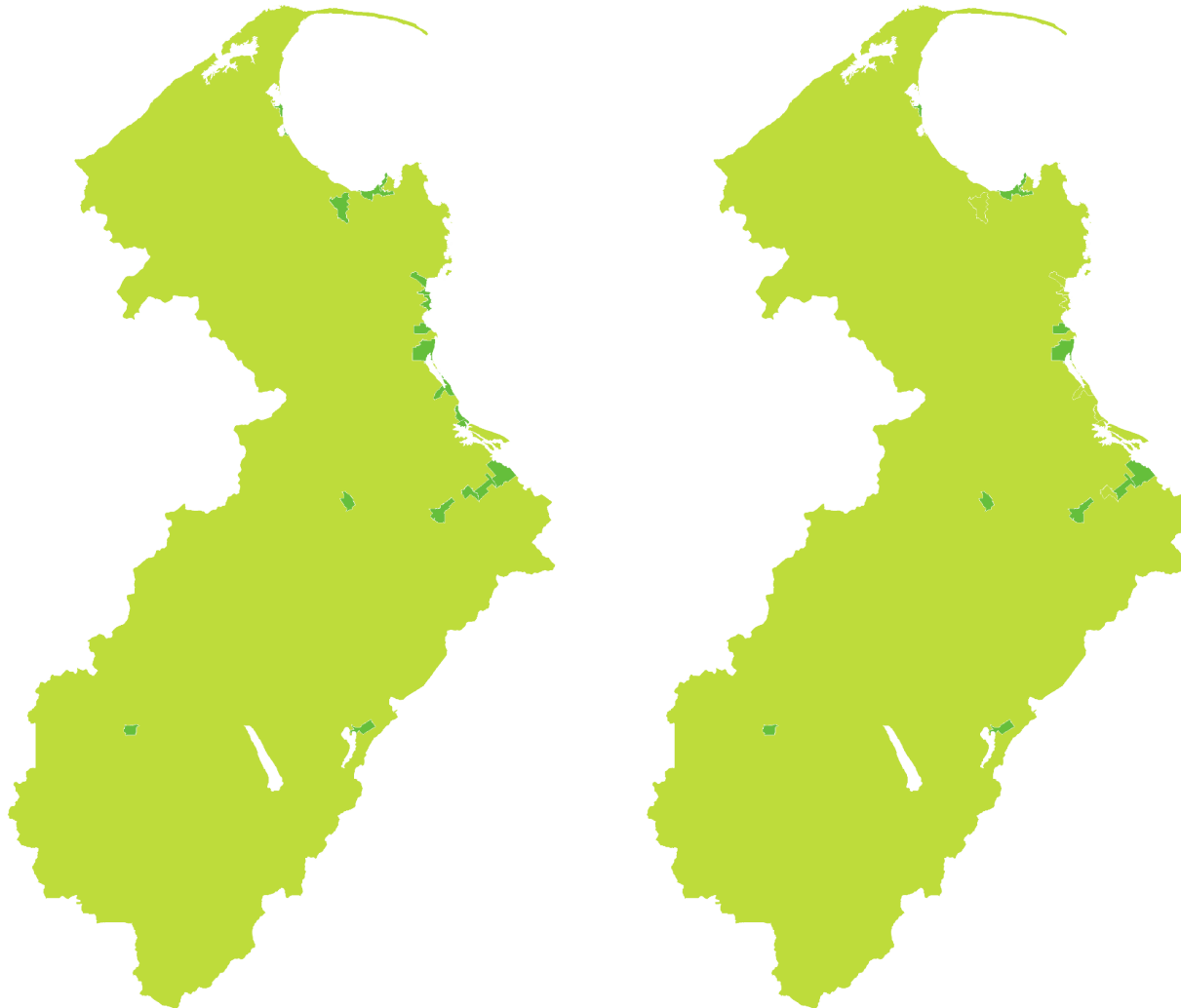
Last 10 years
2010–20



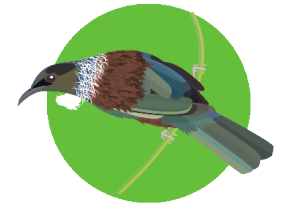
SHALLOW INCREASE
REGIONALLY



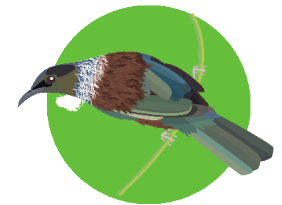
SHALLOW INCREASE
NATIONALLY



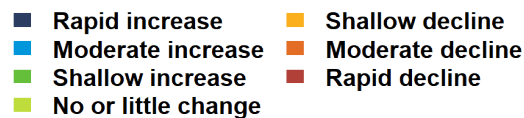
Last 5 years
2015–20



SHALLOW INCREASE
REGIONALLY



SHALLOW INCREASE
NATIONALLY



TASMAN | House sparrow | Tiu

How have garden bird counts changed in this region?



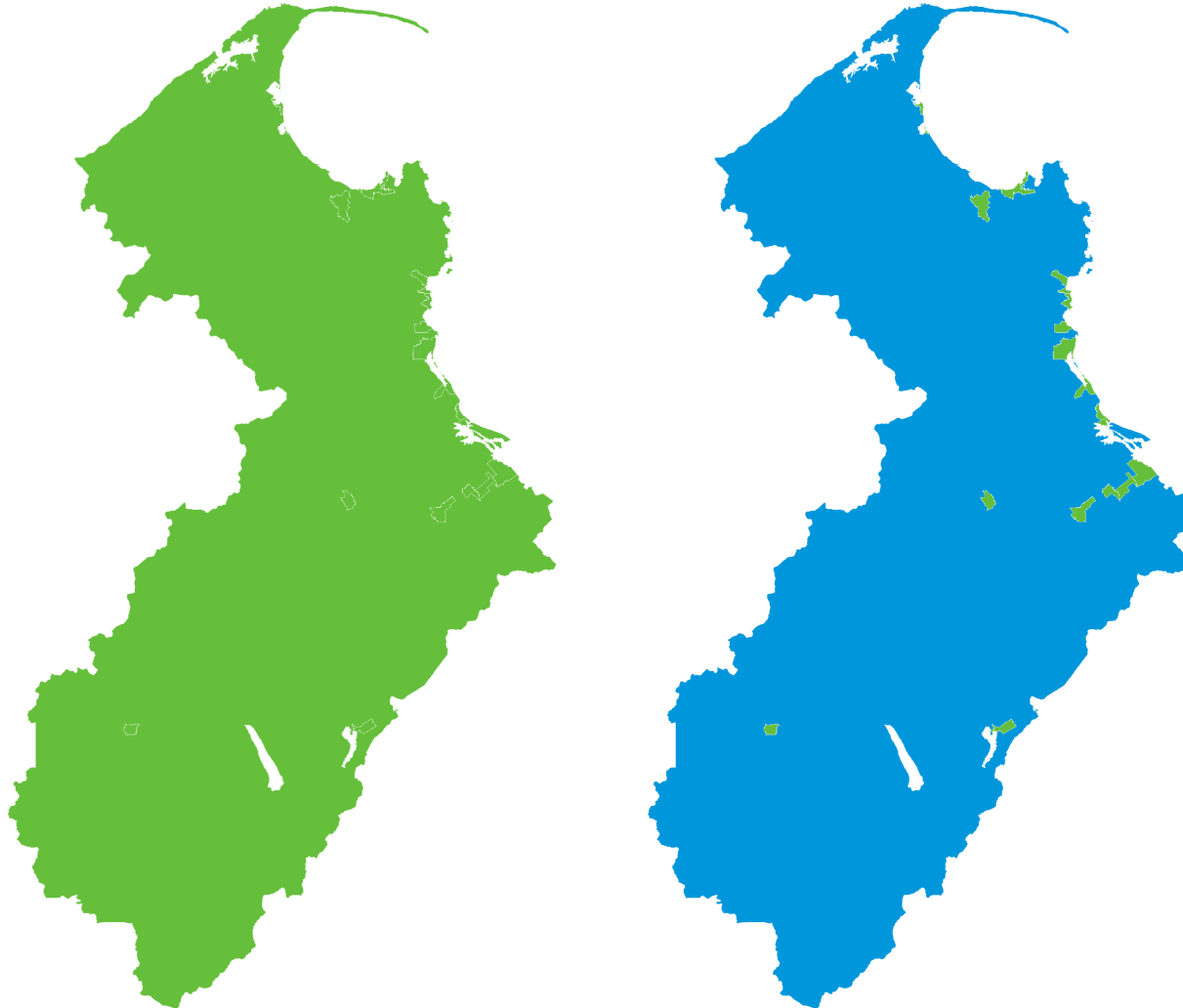
Last 10 years
2010–20



SHALLOW INCREASE
REGIONALLY



LITTLE OR NO CHANGE
NATIONALLY



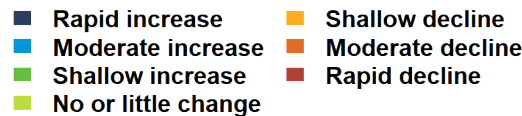
Last 5 years
2015–20



SHALLOW INCREASE
REGIONALLY



LITTLE OR NO CHANGE
NATIONALLY



TASMAN | Blackbird | Manu pango

How have garden bird counts changed in this region?



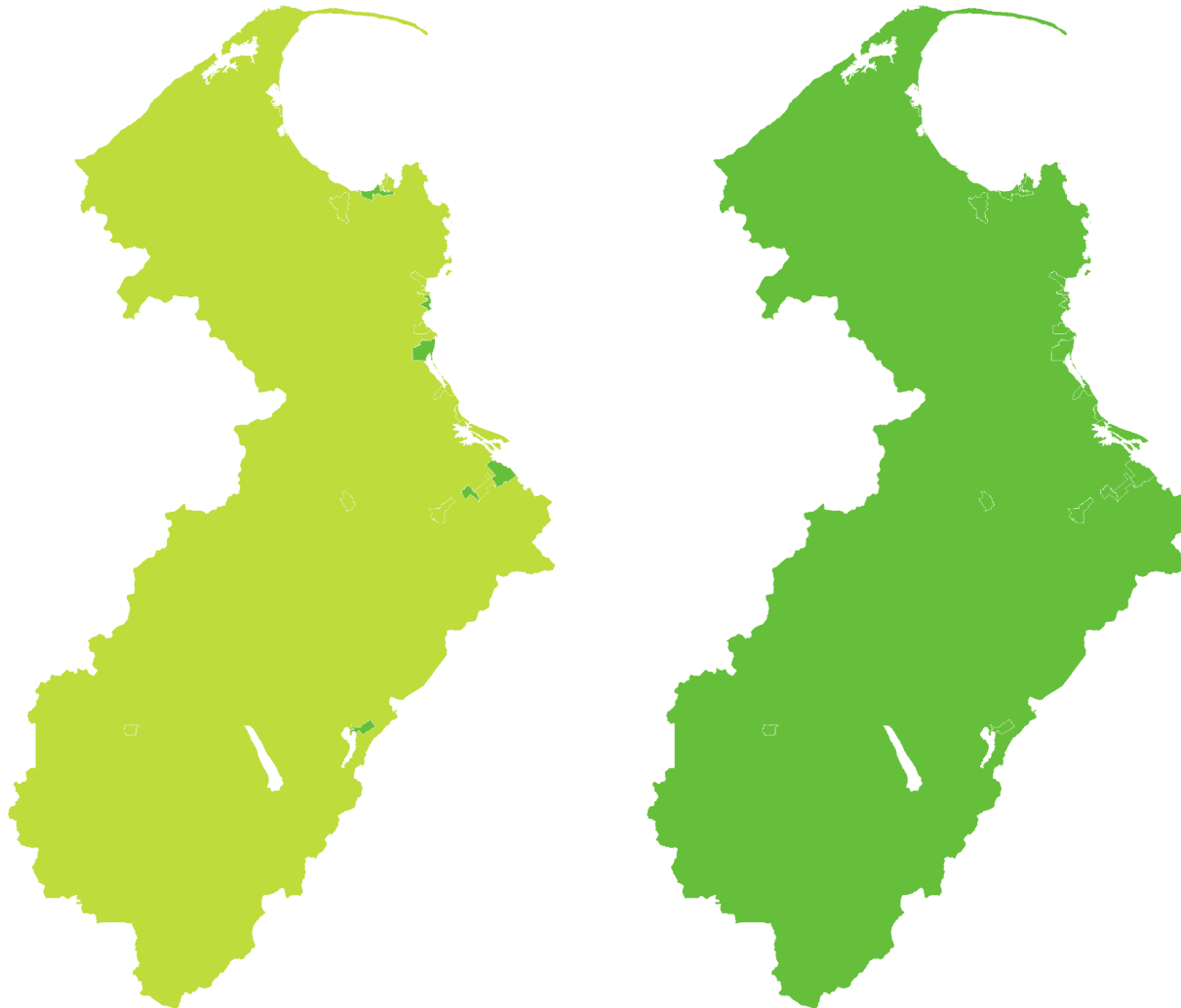
Last 10 years
2010–20



LITTLE OR NO CHANGE
REGIONALLY



LITTLE OR NO CHANGE
NATIONALLY



Last 5 years
2015–20



SHALLOW INCREASE
REGIONALLY



SHALLOW INCREASE
NATIONALLY

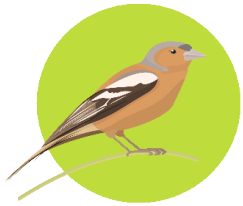


TASMAN | Chaffinch | Pahirini

How have garden bird counts changed in this region?



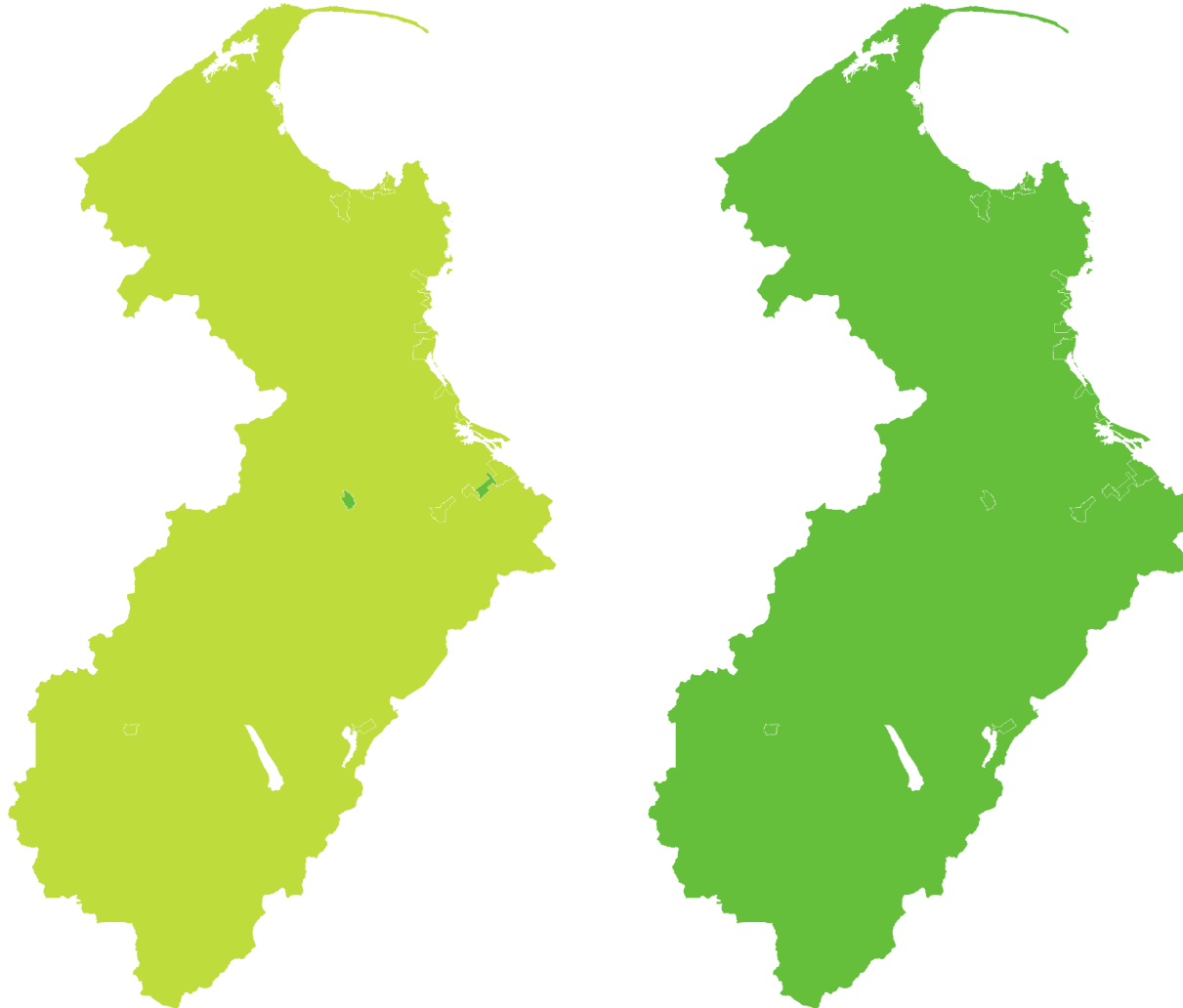
Last 10 years
2010–20



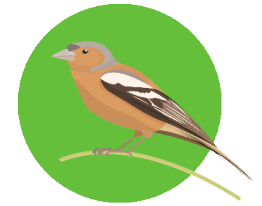
LITTLE OR NO CHANGE
REGIONALLY



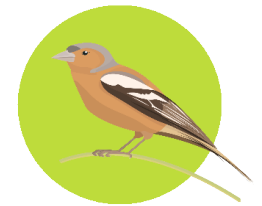
LITTLE OR NO CHANGE
NATIONALLY



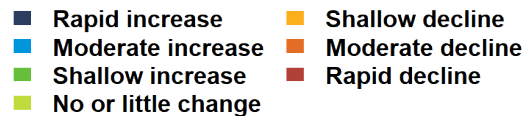
Last 5 years
2015–20



SHALLOW INCREASE
REGIONALLY



LITTLE OR NO CHANGE
NATIONALLY

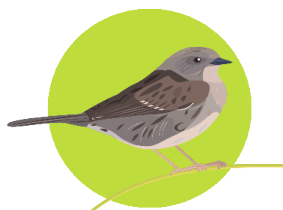


TASMAN | Dunnock

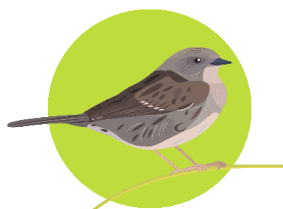
How have garden bird counts changed in this region?



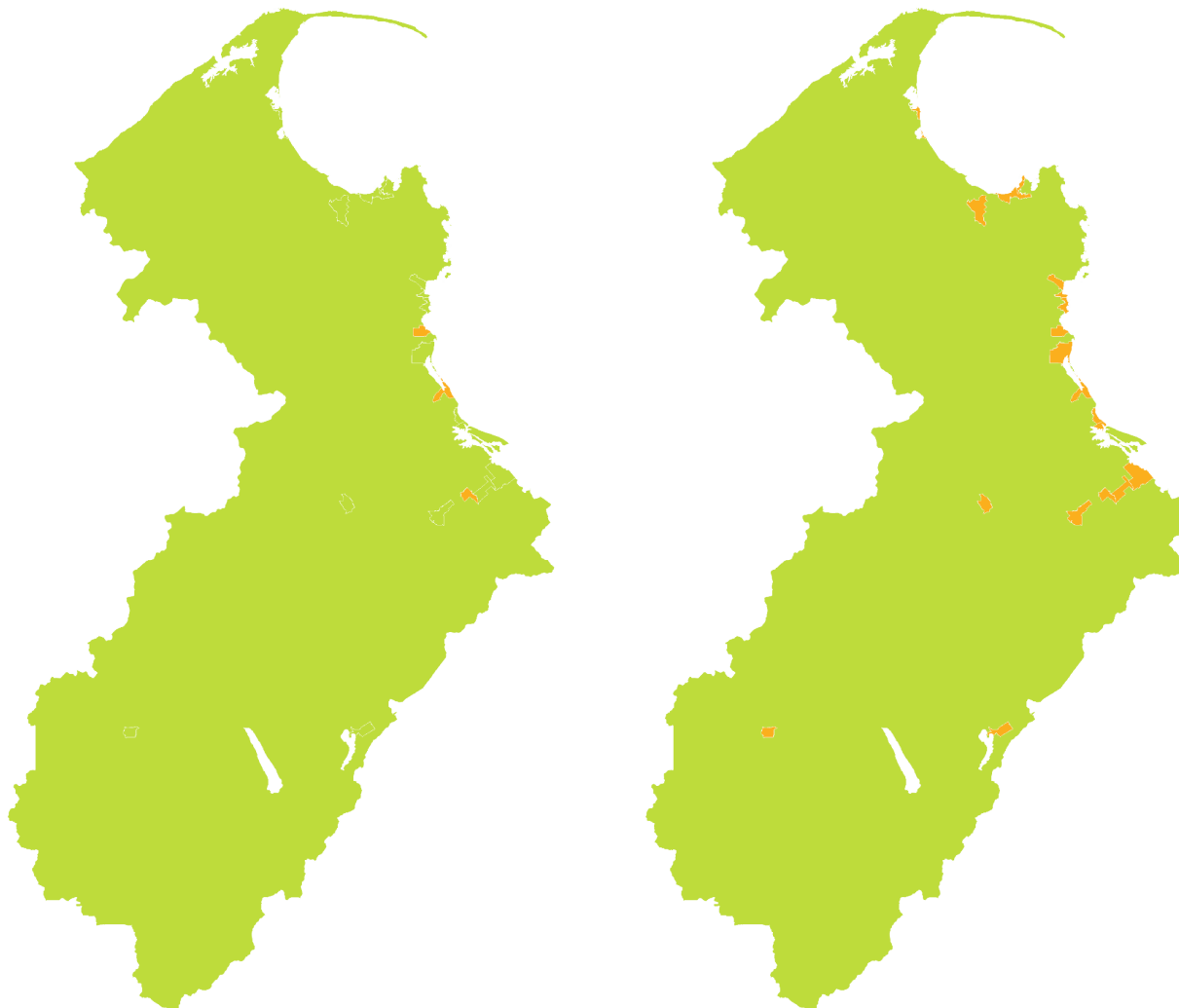
Last 10 years
2010–20



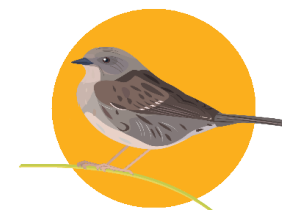
LITTLE OR NO CHANGE
REGIONALLY



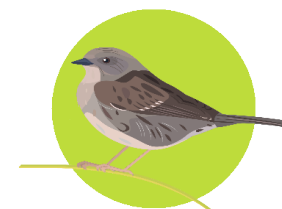
LITTLE OR NO CHANGE
NATIONALLY



Last 5 years
2015–20



SHALLOW DECLINE
REGIONALLY



LITTLE OR NO CHANGE
NATIONALLY

■ Rapid increase	■ Shallow decline
■ Moderate increase	■ Moderate decline
■ Shallow increase	■ Rapid decline
■ No or little change	

TASMAN | Bellbird | Korimako

How have garden bird counts changed in this region?



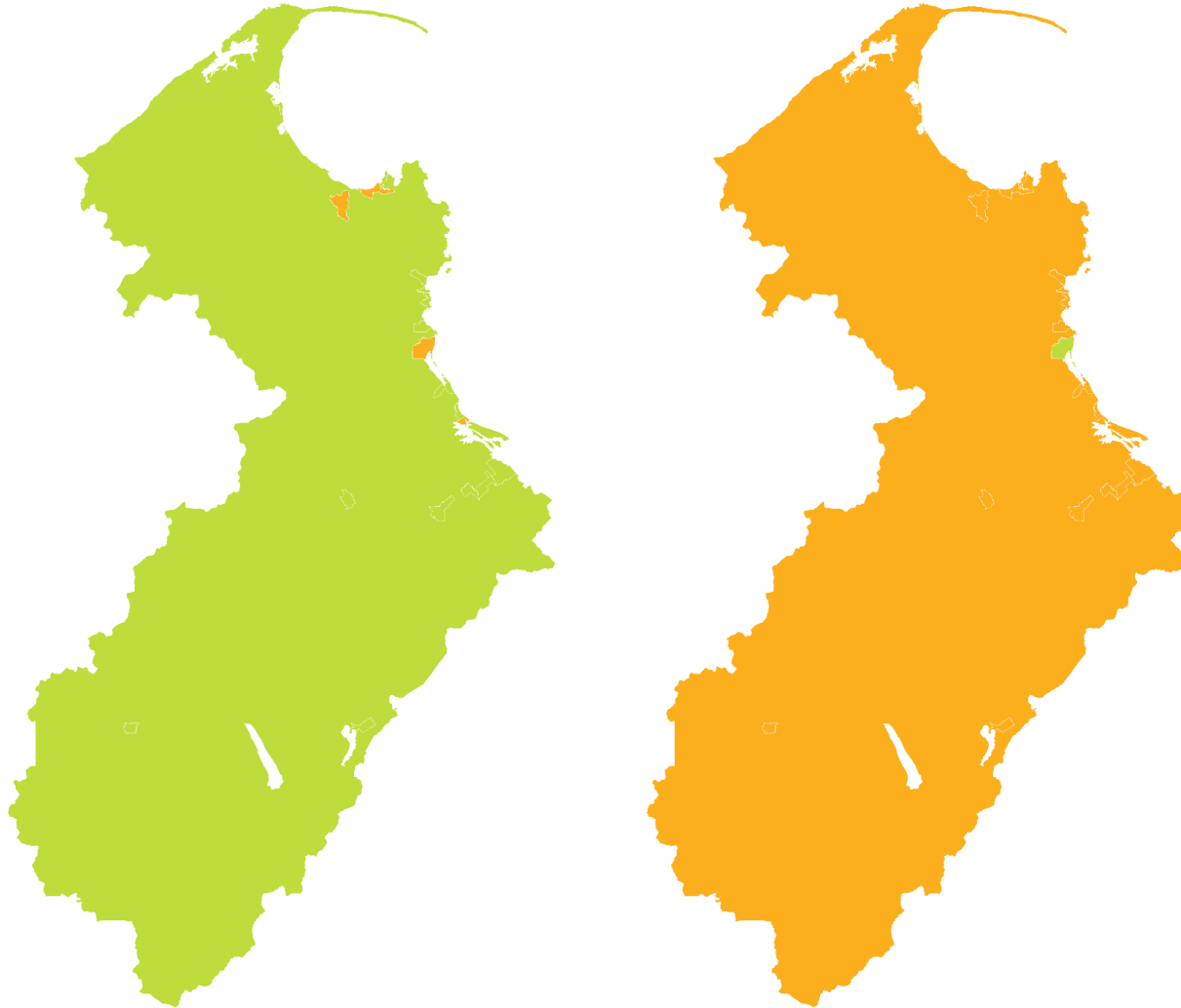
Last 10 years
2010–20



LITTLE OR NO CHANGE
REGIONALLY



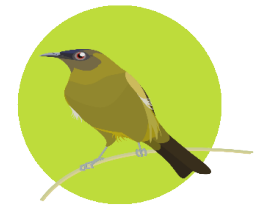
LITTLE OR NO CHANGE
NATIONALLY



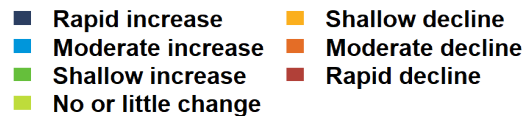
Last 5 years
2015–20



SHALLOW DECLINE
REGIONALLY



LITTLE OR NO CHANGE
NATIONALLY

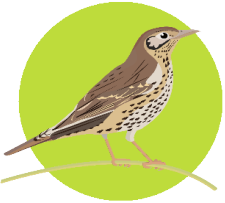


TASMAN | Song thrush

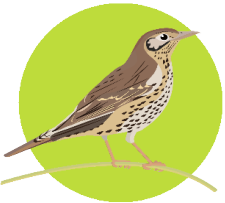
How have garden bird counts changed in this region?



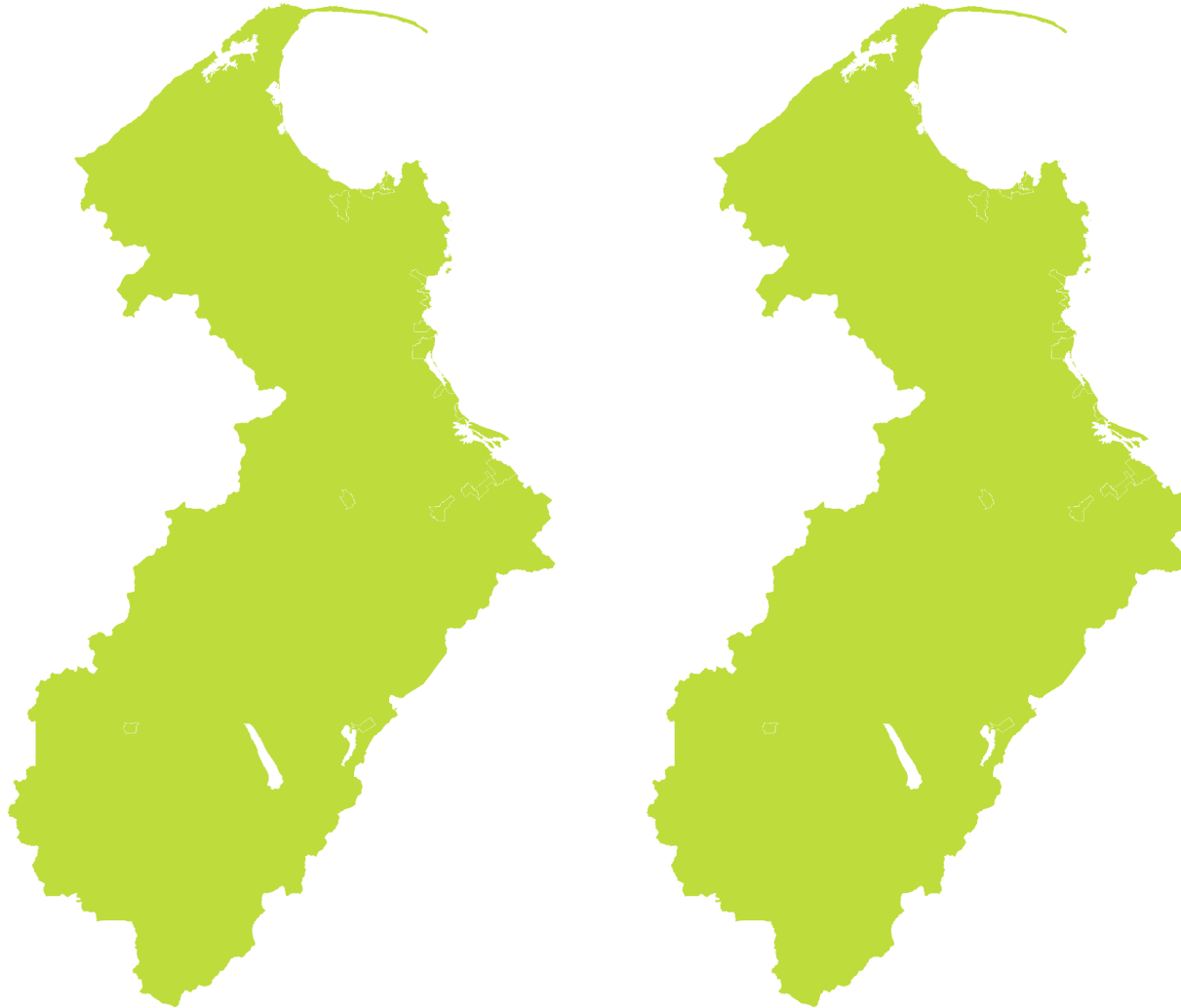
Last 10 years
2010–20



LITTLE OR NO CHANGE
REGIONALLY



LITTLE OR NO CHANGE
NATIONALLY



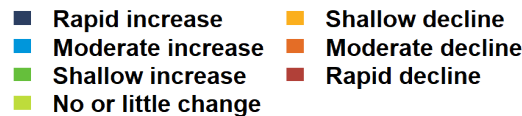
Last 5 years
2015–20



LITTLE OR NO CHANGE
REGIONALLY



LITTLE OR NO CHANGE
NATIONALLY

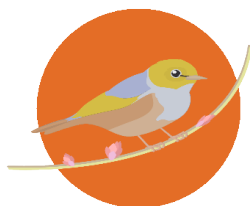


TASMAN | Silvereye | Tauhou

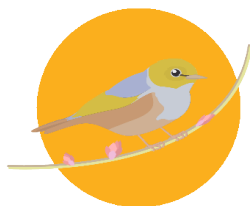
How have garden bird counts changed in this region?



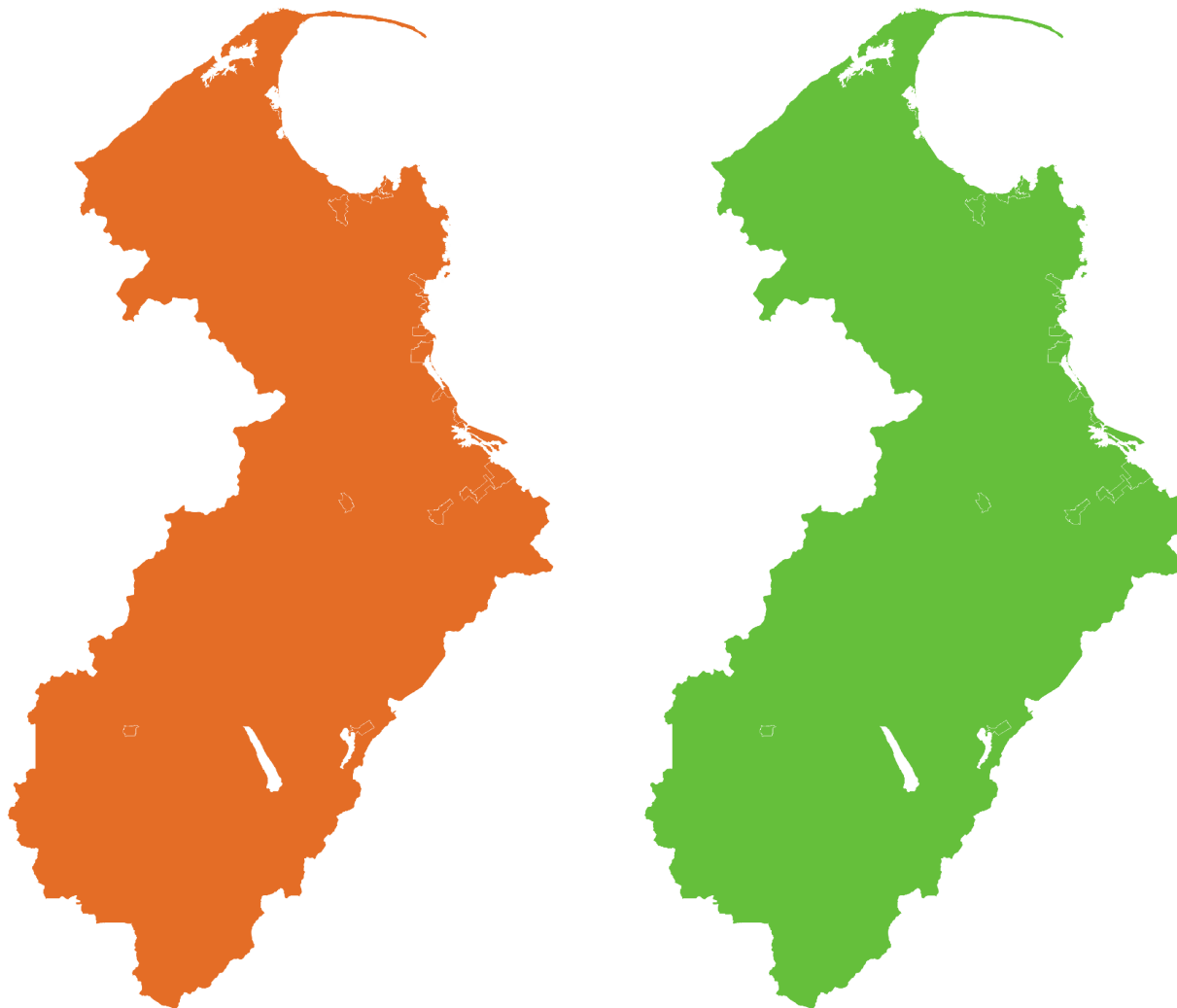
Last 10 years
2010–20



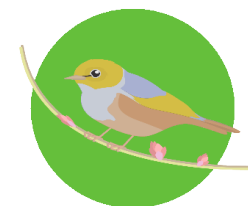
**MODERATE DECLINE
REGIONALLY**



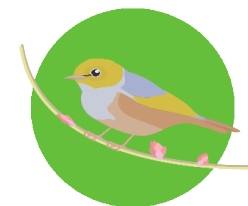
**SHALLOW DECLINE
NATIONALLY**









Last 5 years
2015–20



**SHALLOW INCREASE
REGIONALLY**



**SHALLOW INCREASE
NATIONALLY**

- | | |
|---|--|
|  Rapid increase |  Shallow decline |
|  Moderate increase |  Moderate decline |
|  Shallow increase |  Rapid decline |
|  No or little change | |



2021

26 June to 4 July

Visit our webpage to learn more:
gardenbirdssurvey.landcareresearch.co.nz

This report should be cited as: Hayman E, Brandt AJ, MacLeod CJ, Howard S, Gormley AM, Spurr EB. 2021.
State of NZ Garden Birds 2020 | Te Āhua o ngā Manu o te Kāri i Aotearoa.
Manaaki Whenua – Landcare Research, Lincoln. ISSN 2744-5267.



**Manaaki
Whenua**
Landcare
Research