

***Trichia erecta* Rex SM69 (= PDD 110442) – a good match. Fitting Stephenson, Martin & Alexopoulos, the Listers and Marie Farr. Similar to *T. botrytis* but smaller, with a brighter colored spore mass, with spiny (rather than smooth) elaters whose tapering tips are short (rather than long).**

Collection site: Kaitoke Regional Park (Forty-five minutes north of Wellington City, Kaitoke Regional Park covers 2860 hectares in the foothills of the Tararua Ranges.)

Collection date: 19 October 2010

Substrate: bark of 2 cm wet, decaying branch

Collector & Identifier: Dan Mahoney

Voucher materials: dried herbarium material [SM69 (= PDD 110442)] & 1 semi-permanent Shear's mounting fluid (SMF) heated slide; several dissecting scope in situ projection slides of the fruiting bodies (the best of these scanned) and a number of compound scope digital photos from SMF microscope slides; Dan's brief description below.

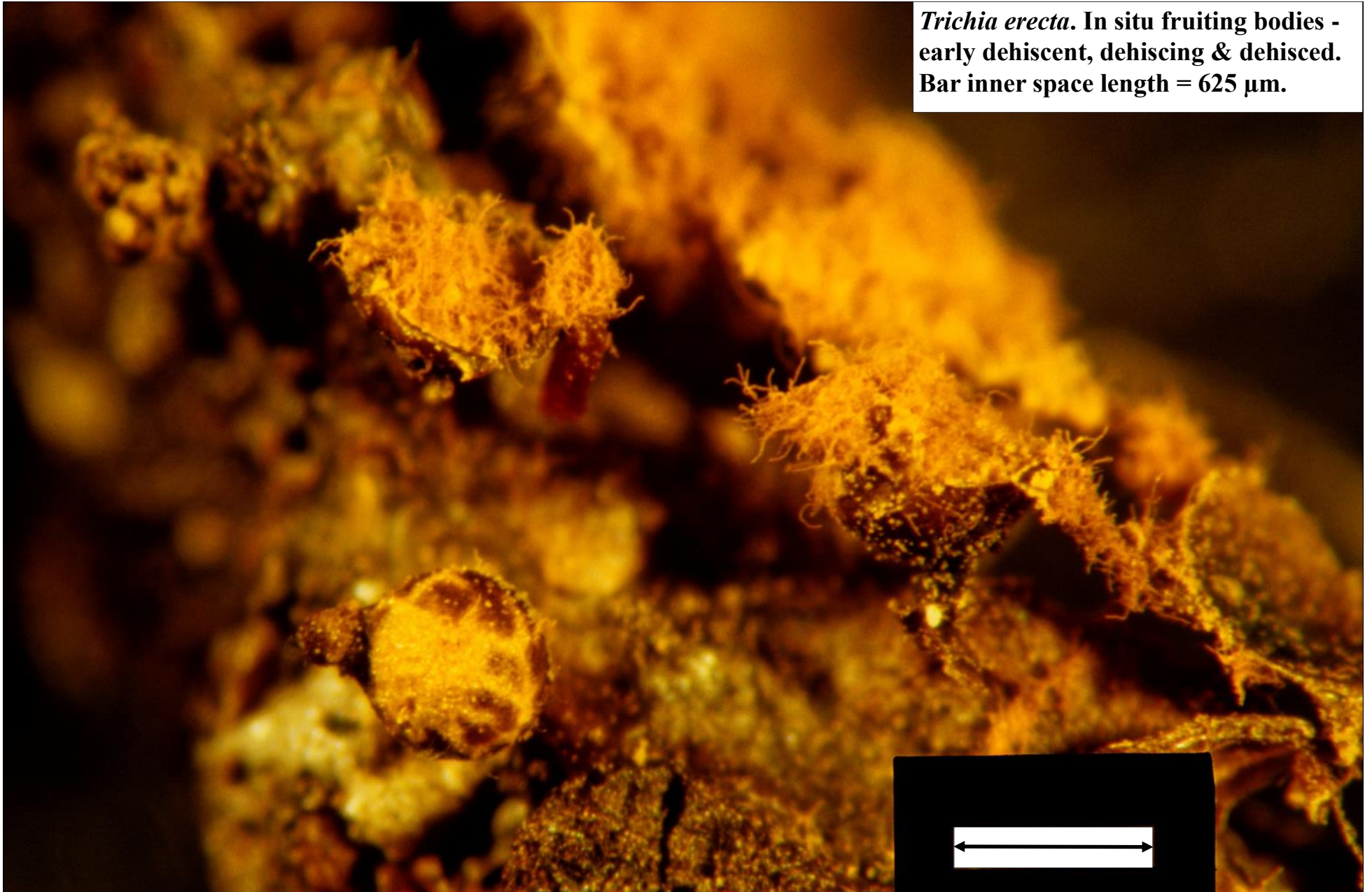
Brief description: The collection includes a relatively small number of rather ragged-looking, mostly dehiscent fruiting bodies. Stephenson's description on p. 93 of his *Myxomycetes of New Zealand* (2003) matches our specimen. This species seems fairly clear-cut as treated by Marie Farr, Martin & Alexopoulos and the Listers. Clive Shirley also pictures it on his NZ website "The Hidden Forest" under "Forest Slime Moulds".



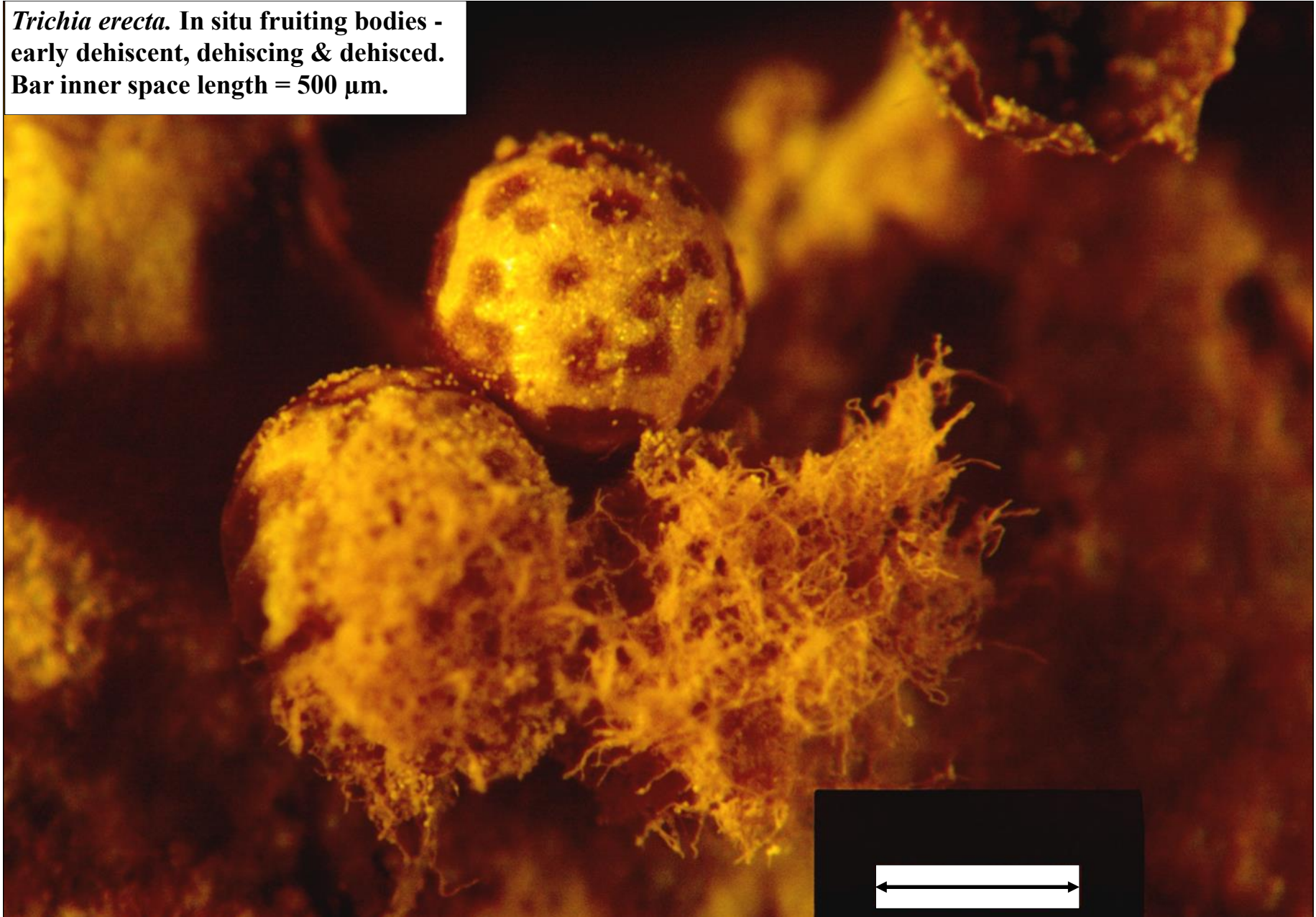
← 800 μm →

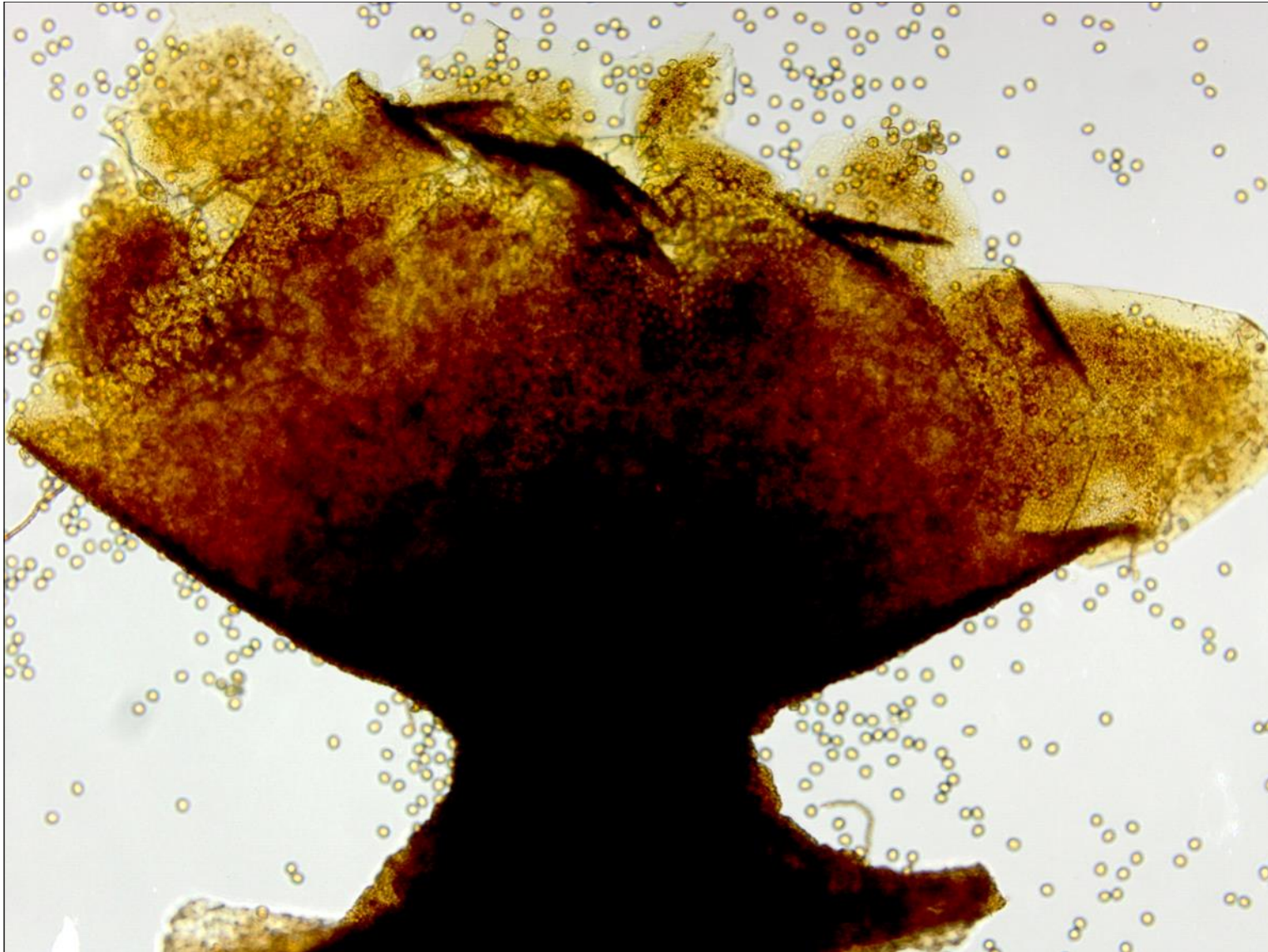
Trichia erecta.
In situ fruiting bodies -
early dehiscent, dehis-
cing & dehisced.

Trichia erecta. In situ fruiting bodies -
early dehiscent, dehiscent & dehisced.
Bar inner space length = 625 μm .

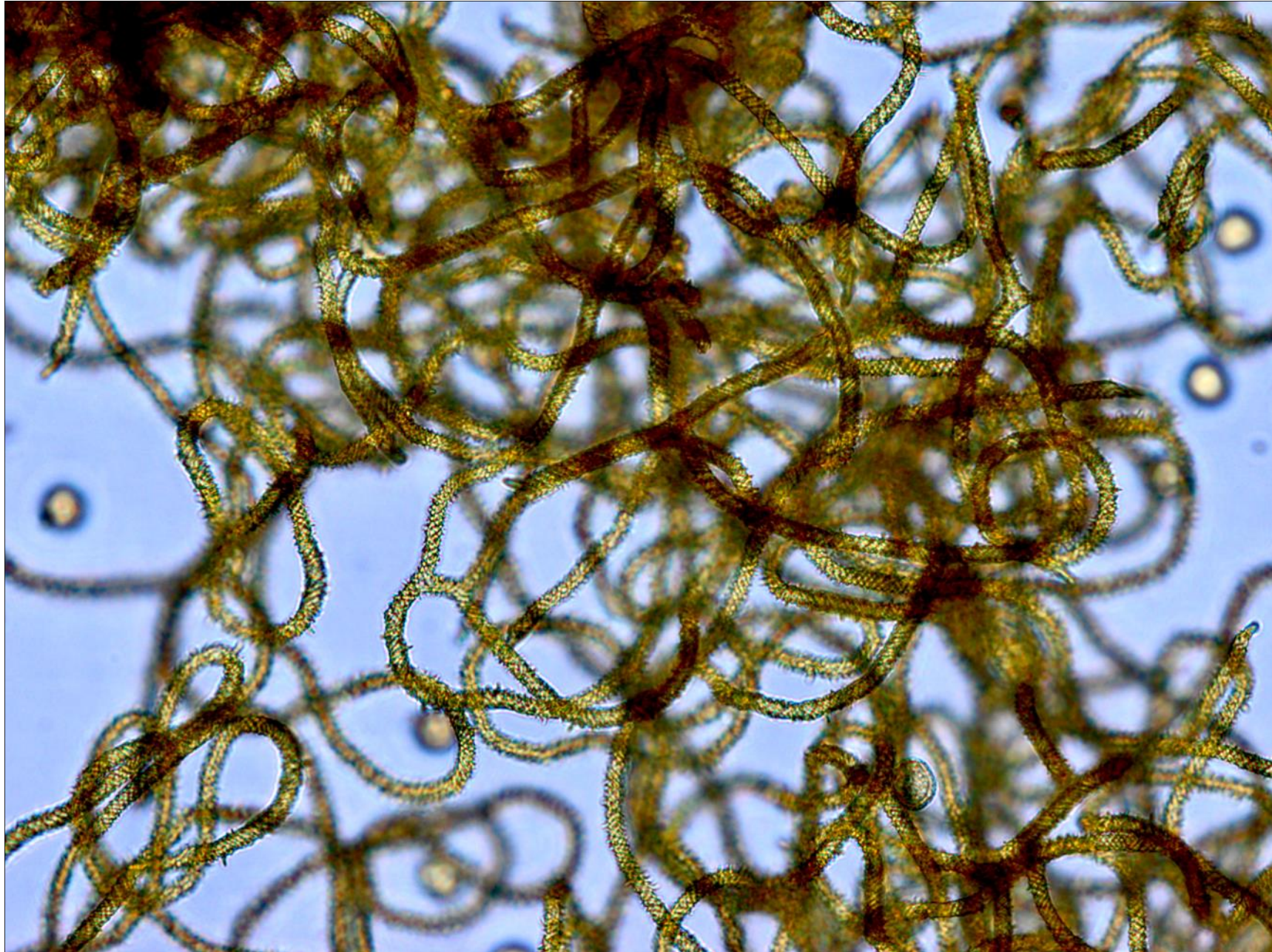


Trichia erecta. In situ fruiting bodies -
early dehiscent, dehiscing & dehisced.
Bar inner space length = 500 μm .





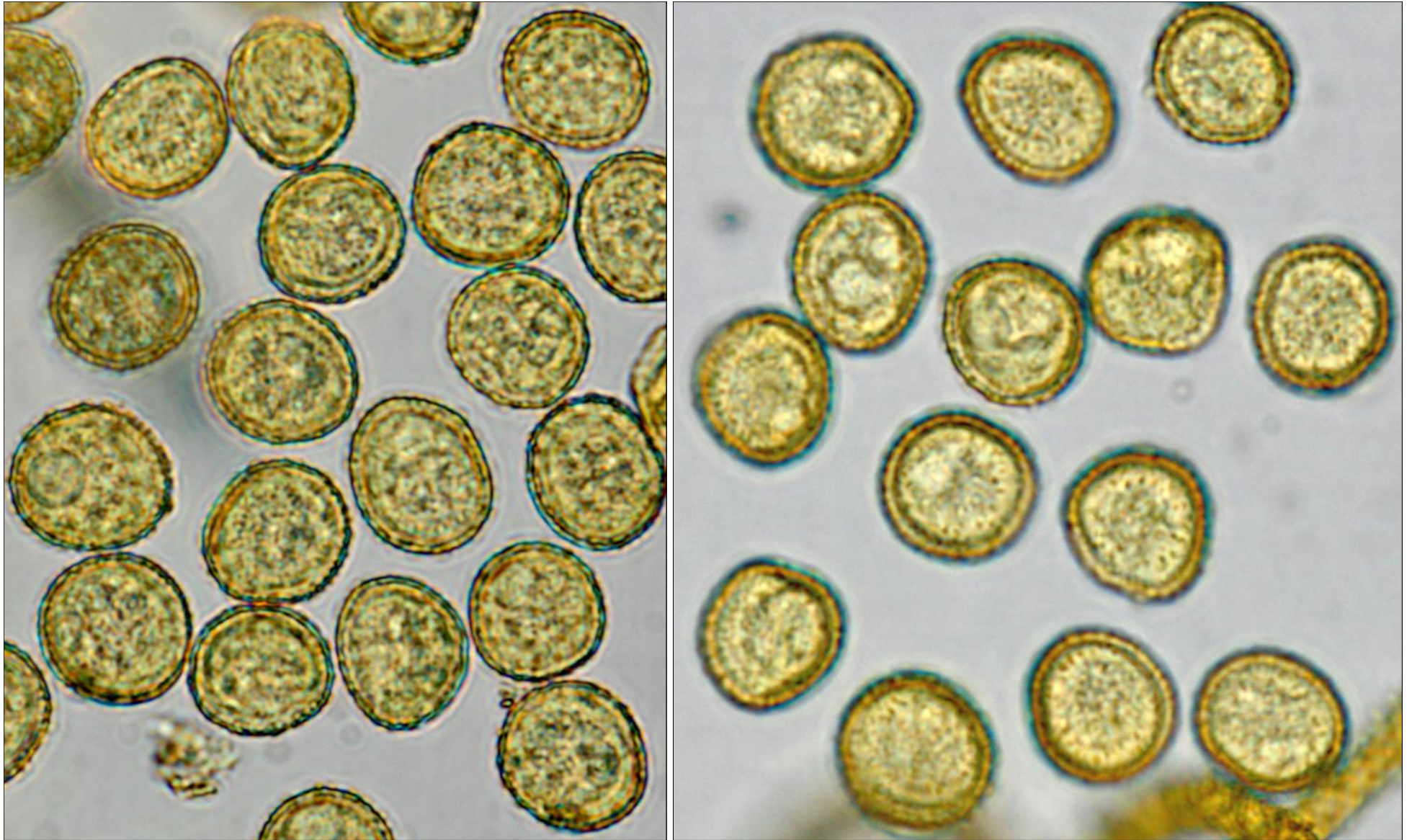
***Trichia erecta*. Dehiscent fruiting body. Stalk 300 μm long. Sporangium basal peridium remnant left to right 1360 μm . SMF heated mount, X10 objective, brightfield.**



Capillitial threads (here seen as tangled elaters) & spores in heated Shear's mounting fluid. X40 objective, bright-field.



Elater apices in heated Shear's mounting fluid. Note the spiny spiral ornamentation and the short tapered apices. X100 objective, bright-field.



Spores (mostly 13 μm in diameter) in heated Shear's mounting fluid. Left photo: median focus. Right photo: surface focus to show the verruculose ornamentation. X100 objective, brightfield.