

***Physarum pusillum* (Berk. & M.A. Curtis) G. Lister SM80**

**Collected:** 6 October 2016 on moist hessian sacking that Ann had stored in the greenhouse

**Collection site:** 45 Gurney Road, Lower Hutt, New Zealand

**Collected by:** Ann Bell

**Identified by:** Dan Mahoney

**Voucher materials:** Dried herbarium specimen (SM80) and 2 SMF slides; in situ photos of fruiting bodies under the Zeiss dissecting scope and digital photos of microscopic detail; Dan's brief comments

**Dan's brief comments:** Closely matching the description in Steve Stephenson's 2003 Myxomycetes of New Zealand.

**Fruiting bodies** varied from those with shorter straight to apically bent stipes to those with longer straighter stipes. **Stipes** were distinctly dark reddish brown and often tapered apically. **Sporangia** were white, globular and heavily covered with white lime. Sporangial **peridia** were single layered. Dehiscence revealed **large white variously angular-shaped lime nodes** which were sometimes seen to be more concentrated in the lower central portion of the sporangium (microscopic details best seen in 70% EtOH mounts). **Spores** were brownish in mass, individually globose and evenly covered with small warts – spores mostly 9-10 µm in diameter.

**Earlier collections:**

1. *Physarum pusillum* on kangaroo dung sample A134, slime mold collection SM21 (= PDD 110401), during Ann's 2005 work for 'An Illustrated Guide to the Coprophilous Ascomycetes of Australia'.
2. *Physarum pusillum* on *Petrogala lateralis* dung sample A193, slime mold collection SM9 (= PDD 110389), during Ann's 2005 work for 'An Illustrated Guide to the Coprophilous Ascomycetes of Australia'.
3. *Physarum pusillum* on dead Nikau palm frond SM76 (= PDD 110449), 21 January 2016, Rimutaka Forest Park – Orongorongo Track, Collected and identified by Dan Mahoney

*Physarum pusillum*.  
In situ fruiting bodies.



← 1667 μm →



***Physarum pusillum*. In situ fruiting bodies. Note the nodding heavily lime-covered sporangia atop dark reddish brown stipes.**

← 800 μm →

*Physarum pusillum*. In situ fruiting bodies. Note the long, somewhat tapering, dark reddish brown stipes and the heavy lime deposits on sporangial peridia.



← 800 μm →

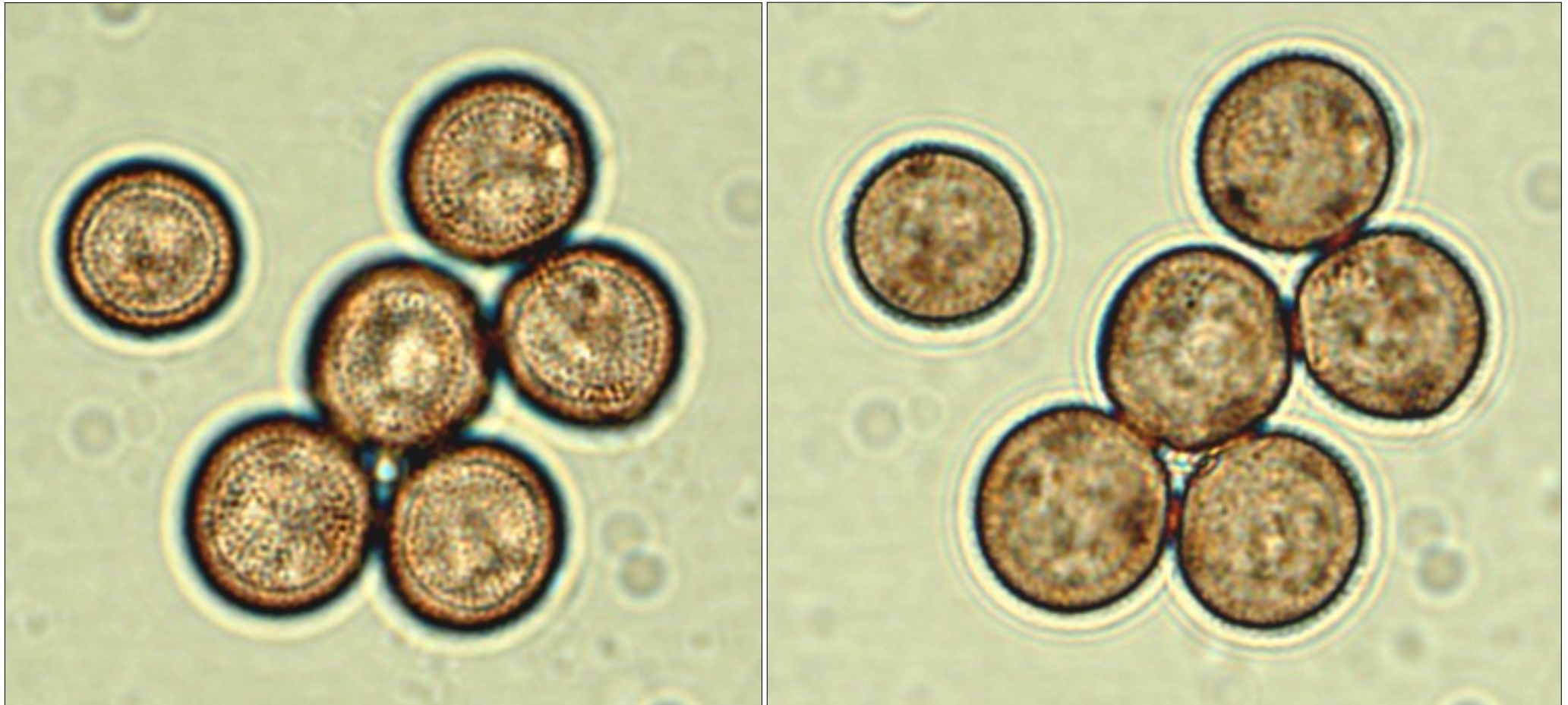


← 500  $\mu\text{m}$  →

*Physarum pusillum*. In situ dehiscing sporangia showing inner white angular lime nodes and dark spore masses. Note the concentration of lime nodes in the lower center portion of the right-hand dehiscent sporangium.

***Physarum pusillum.***  
**Angular lime nodes**  
**filled with granular**  
**lime. 70% EtOH, 40X**  
**objective, brightfield.**





***Physarum pusillum* spores. 70% EtOH, 100X objective, brightfield. Left photo focus on the evenly verruculose surface; right photo focus on the same spores in median view**