

***Iodophanus carneus* (Pers.) Korf – PDD 121654 (= AEB 1311)**

Collection site: Lower Hutt, New Zealand. Along the Waiwhetu Stream, in grassy areas that border Callaghan Innovation (base of the Wainuiomata Hill Road)

Collection date: 12 November 2017

Substrate: European rabbit (*Oryctolagus cuniculus*) dung

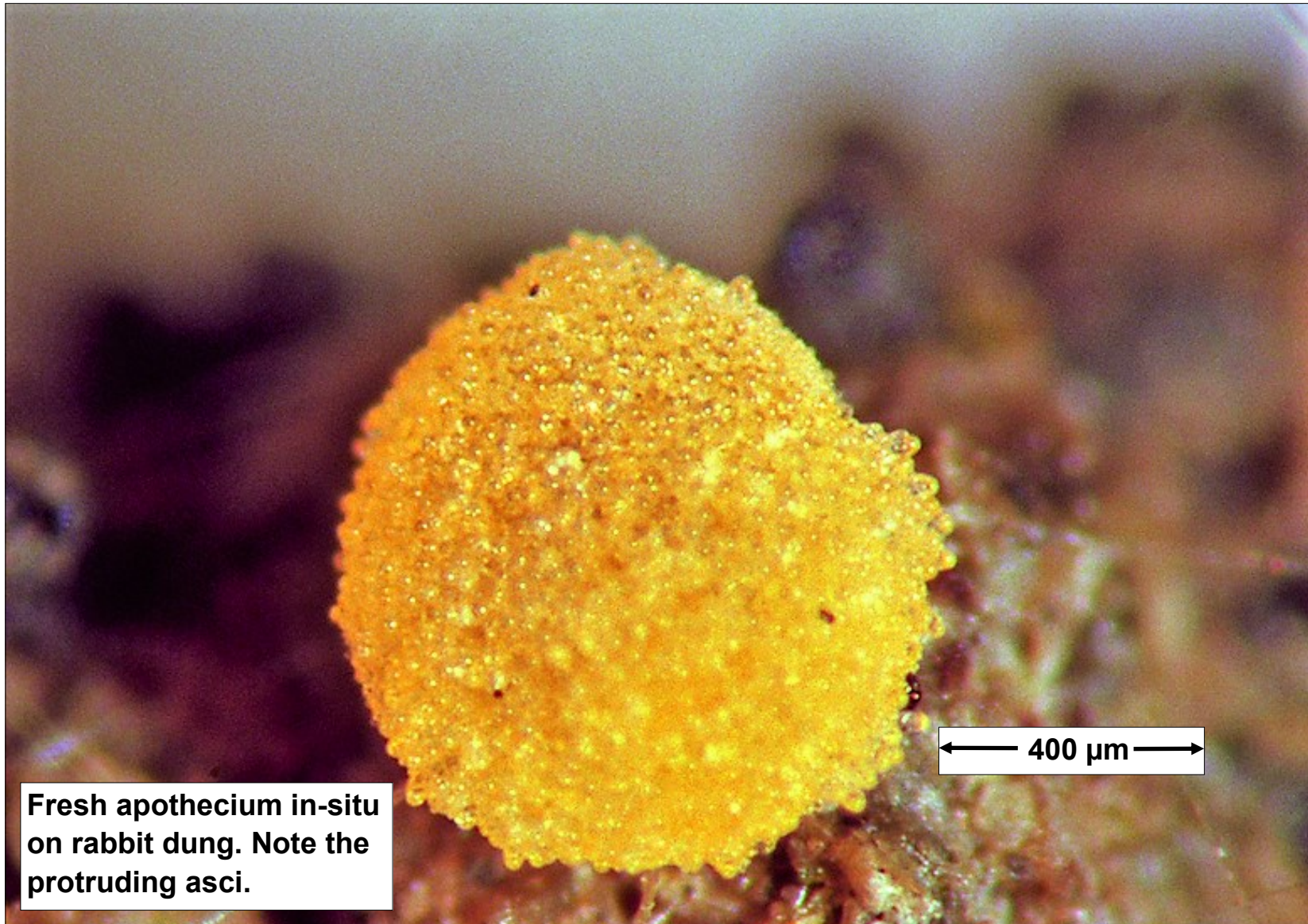
Collector & Identifier: Dan Mahoney

Voucher materials: dried herbarium material accompanied by one Shear's mounting fluid (SMF) semi-permanent slide mount; one in-situ dissecting scope photo of an apothecium on the dung and several photos of microscopic detail from water and SMF slide mounts.

Other fungi also present on rabbit pellets from this collection include the following: *Ascobolus minutus*, *A. stictoideus*, *Collariella bostrychodes* (\equiv *Chaetomium bostrychodes*), *Delitschia (patigonica?)*, *Mucor* spp., *Pilaira anomala*, *Podospora curvicolla*, *Saccobolus caesariatus*, *Sporormiella australis*

Dan's brief comments: Apothecia numerous on many of the incubated rabbit pellets. In-situ and microscopic-detail photos were taken on 25 November. **Paraphyses** orangish with apical cells swollen (capitate) – with orangish pigment granules throughout but especially in the swollen apical cells. **Ascospores** regularly ellipsoidal, often 20–21 \times 12–13 μ m, hyaline, punctate. Squash mounts negative in Melzer's and without any stain taken up in aniline blue lactic acid. A good match to various descriptions of this common coprophilous fungus – see especially Doveri, F. 2004. *Fungi Fimicoli Italici*. Trento, A.M.B, Fondazione Studi Micologici, page 471.

PDD collections of *Iodophanus carneus* on the Systematics Collections Data website as of June, 2018 (excluding the present collection): 20 collections (17 from New Zealand, 3 from Australia); determined by: Jerry Cooper (2), Peter Johnston (1), Nils Lundqvist (2) and Ann Bell (15, including the 3 from Australia).

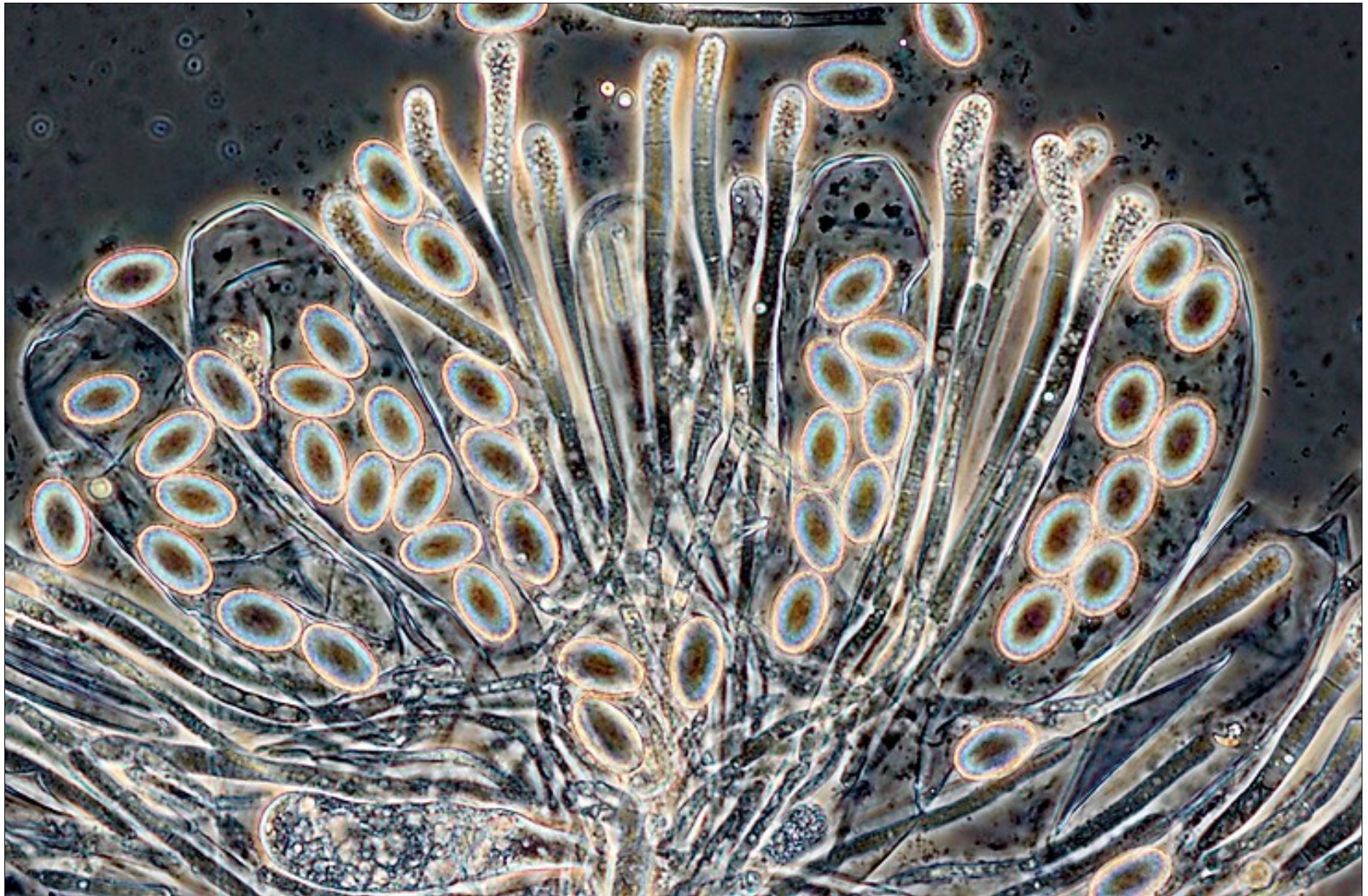


Fresh apothecium in-situ on rabbit dung. Note the protruding asci.

← 400 μm →



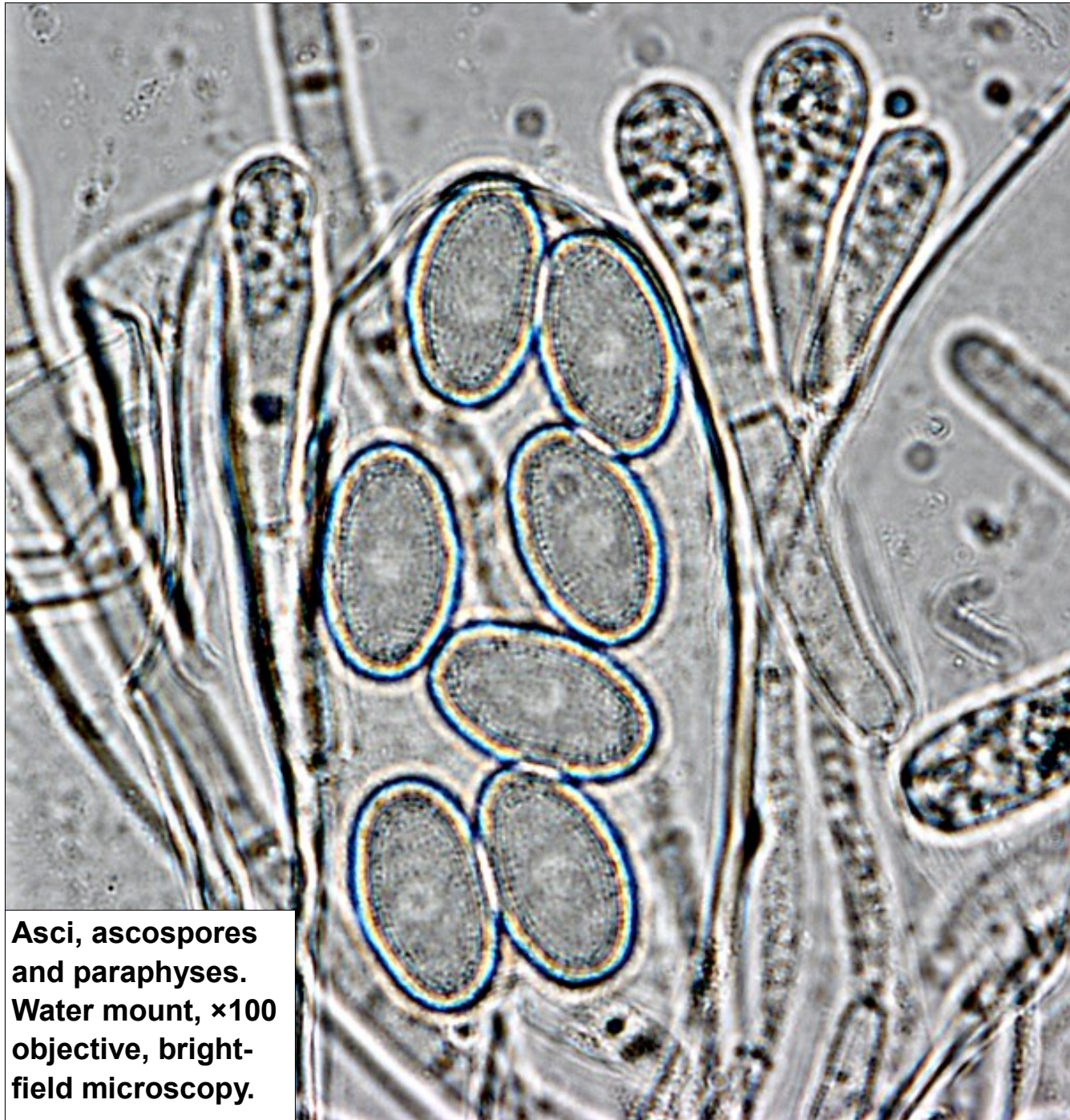
Asci, ascospores and paraphyses. Note the orangish paraphyses and especially their capitate apical cells (arrowed). Water mount, ×40 objective, brightfield microscopy.



Asci, ascospores and paraphyses. Same field of view as on the previous page, but using phase microscopy.



**Asci, ascospores
and paraphyses.
SMF mount, ×40
objective, bright-
field microscopy.**



**Asci, ascospores
and paraphyses.
Water mount, ×100
objective, bright-
field microscopy.**