

***Nectria pseudotrichia* Berk. & Curt. with its anamorph *Tubercularia lateritia* (Berk.) Seifert – AEB 1089 (= PDD 98333)**

Substrate: Two cm diameter dead twigs of *Griselinia lurida*. The perithecial clusters were found both on bark and wood but mostly on the bark.

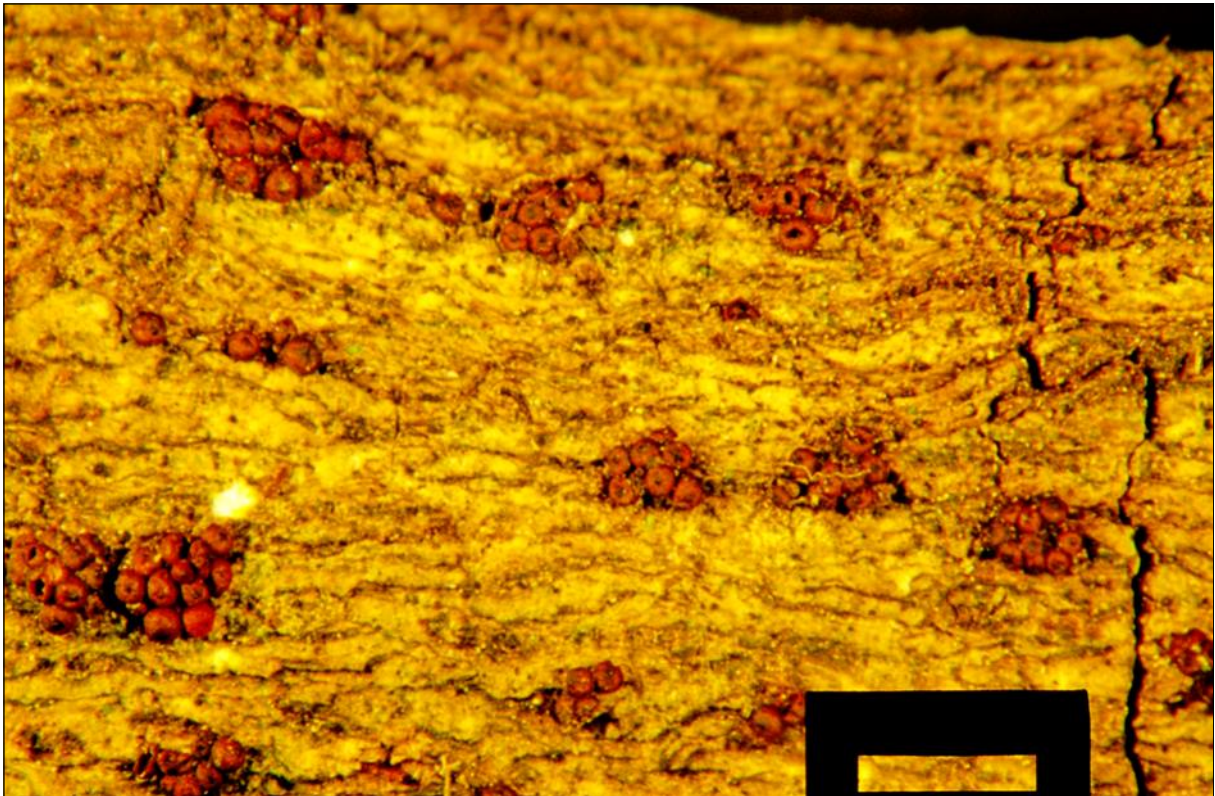
Collector: Pam Catcheside; **Identifier:** Dan Mahoney

Collection occasion and site: **Occasion:** The 23rd New Zealand Fungal Foray which was held jointly with the Australasian Mycological Society Conference from 10th – 16th May 2009 at El Rancho Christian Holiday Camp, close to Waikanae on the Kapiti Coast; **Site:** Nga Manu Nature Reserve bushwalk, Waikanae. This is mixed podocarp/broadleaved forest on low dunes and hollows.

Collection date: 12 May 2009

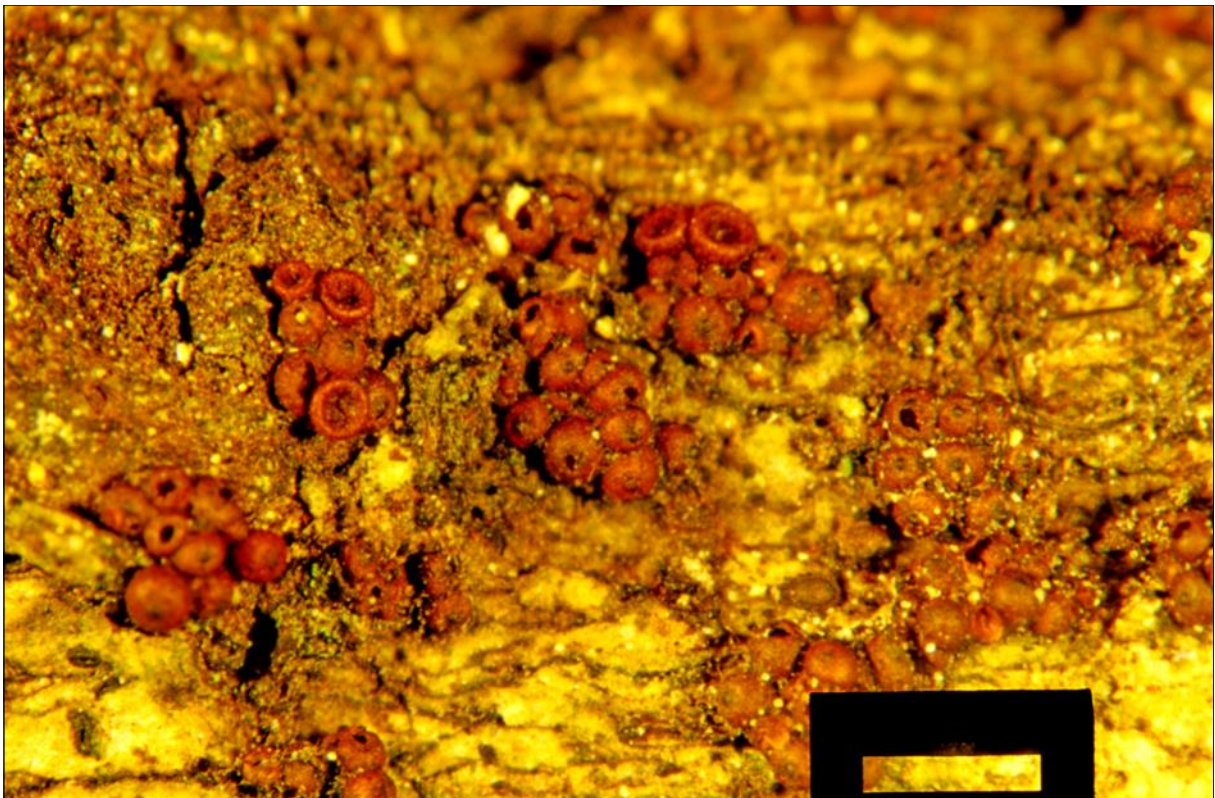
Voucher materials: dried herbarium specimen AEB 1089 (= PDD 98333) accompanied by 5 Shear's mounting fluid (SMF) microscope slides; Dan's brief notes below, his digital compound scope photos and his scans of in-situ dissecting scope projection slides.

Very brief comments: The *Tubercularia* anamorph was present but not abundant. Clavate asci had 8 (often fewer) ascospores arranged biserially to triserially. Ascospores varied in size and shape but were usually broader near one end. Dictyosporous ascospores were (22–)29–37 × (–8)9–11 µm. This specimen fits nicely into *Nectria pseudotrichia* Berk. & Curt. and its anamorph *Tubercularia lateritia* (Berk.) Seifert. For a thorough treatment of both teleomorph and anamorph see pp. 118–127 of the CBS publication, Studies in Mycology #27 (A Monograph of *Stilbella* and some allied Hyphomycetes, 1985, by Keith Seifert).



Top: Perithecial clusters in-situ on the dead twig, bar inner space length = 2000 μm

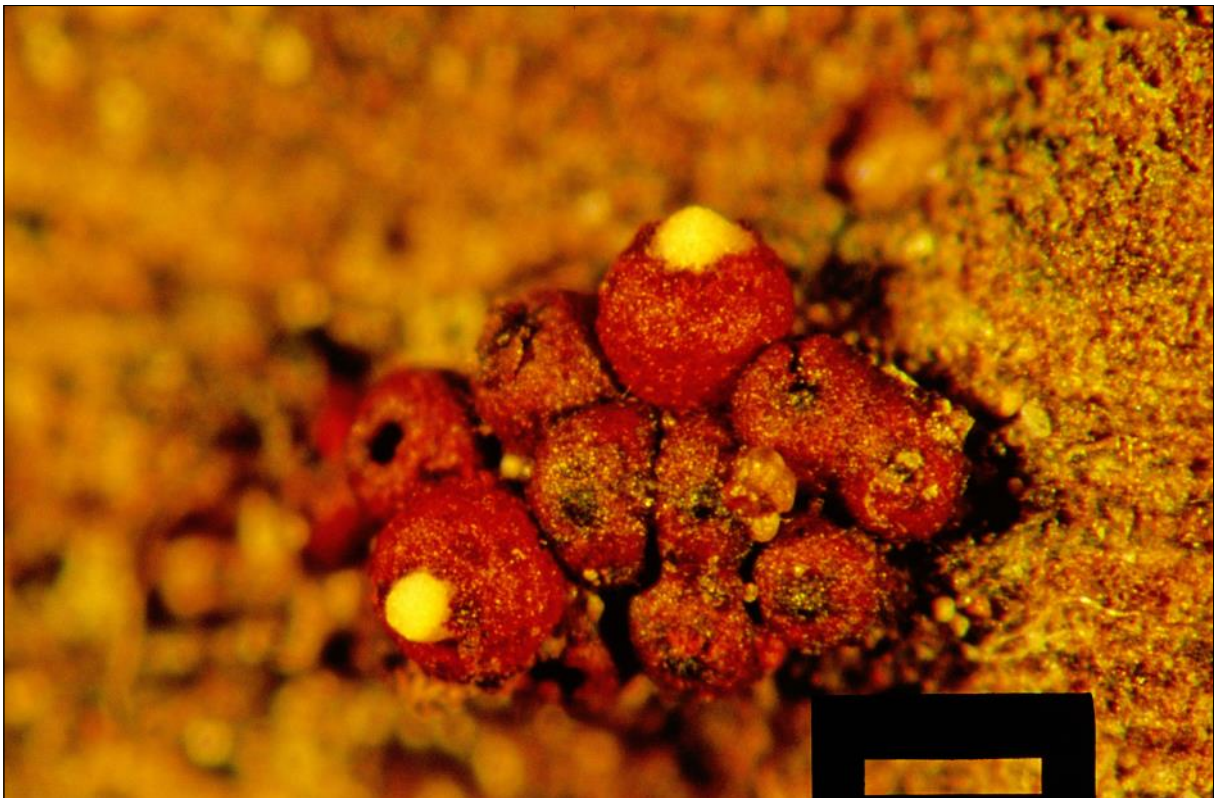
Bottom: Perithecial clusters showing collapsed cup-like perithecia in-situ on the twig, bar inner space length = 1250 μm

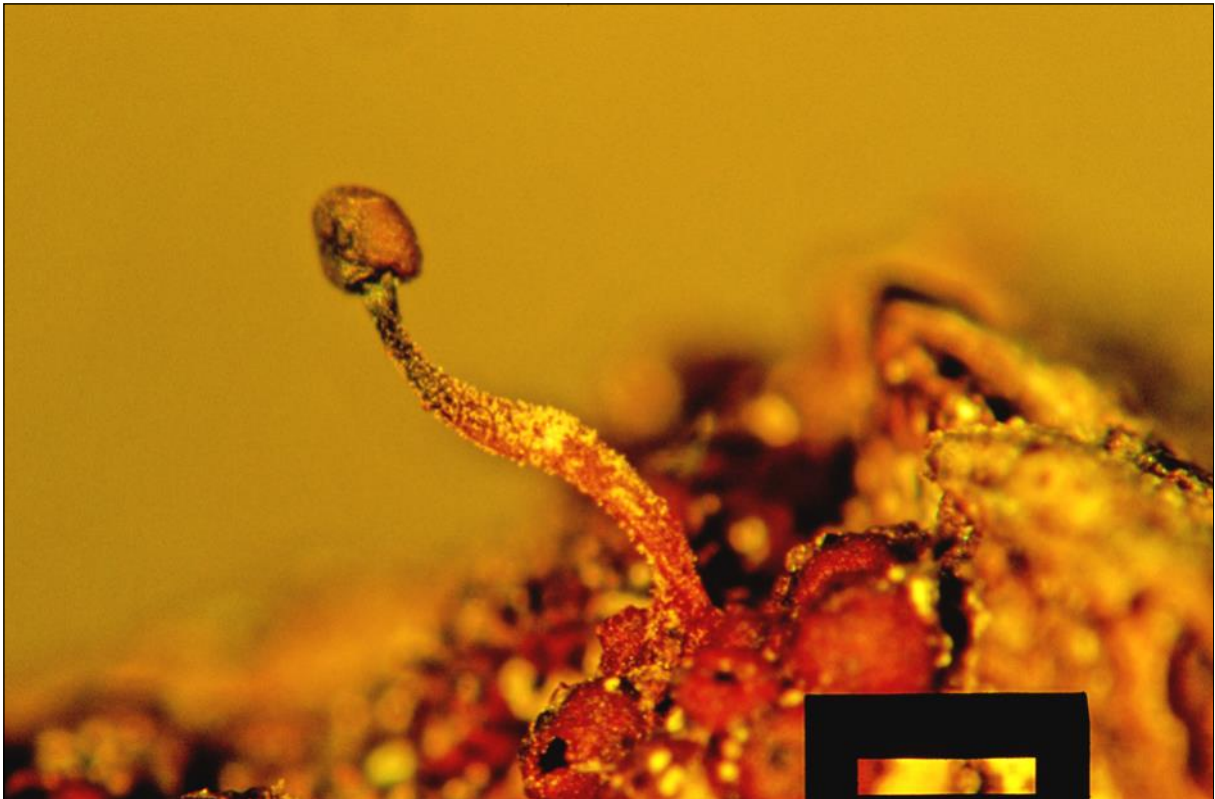




Top: Perithecial cluster in-situ on the twig, bar inner space length = 400 μ m

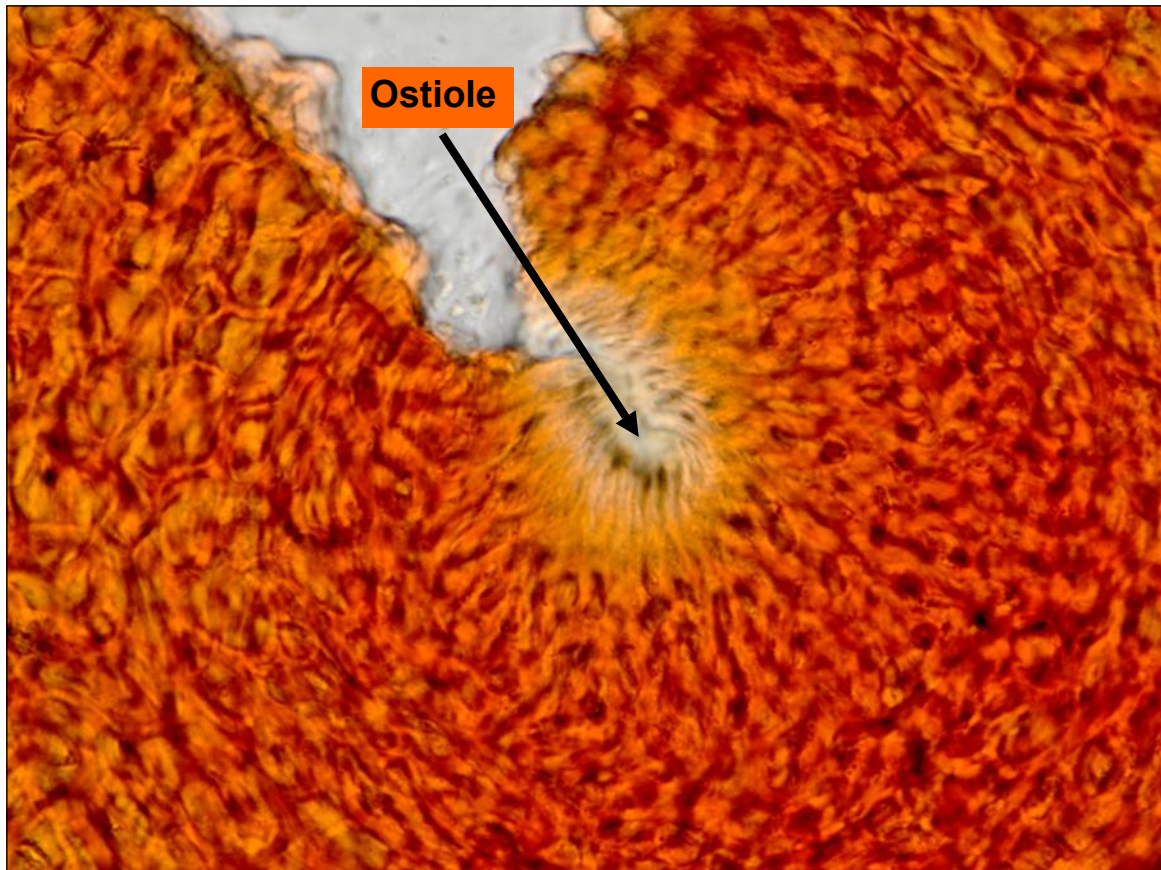
Bottom: Perithecial cluster showing perithecia exuding dull creamy-yellow ascospores, bar inner space length = 400 μ m



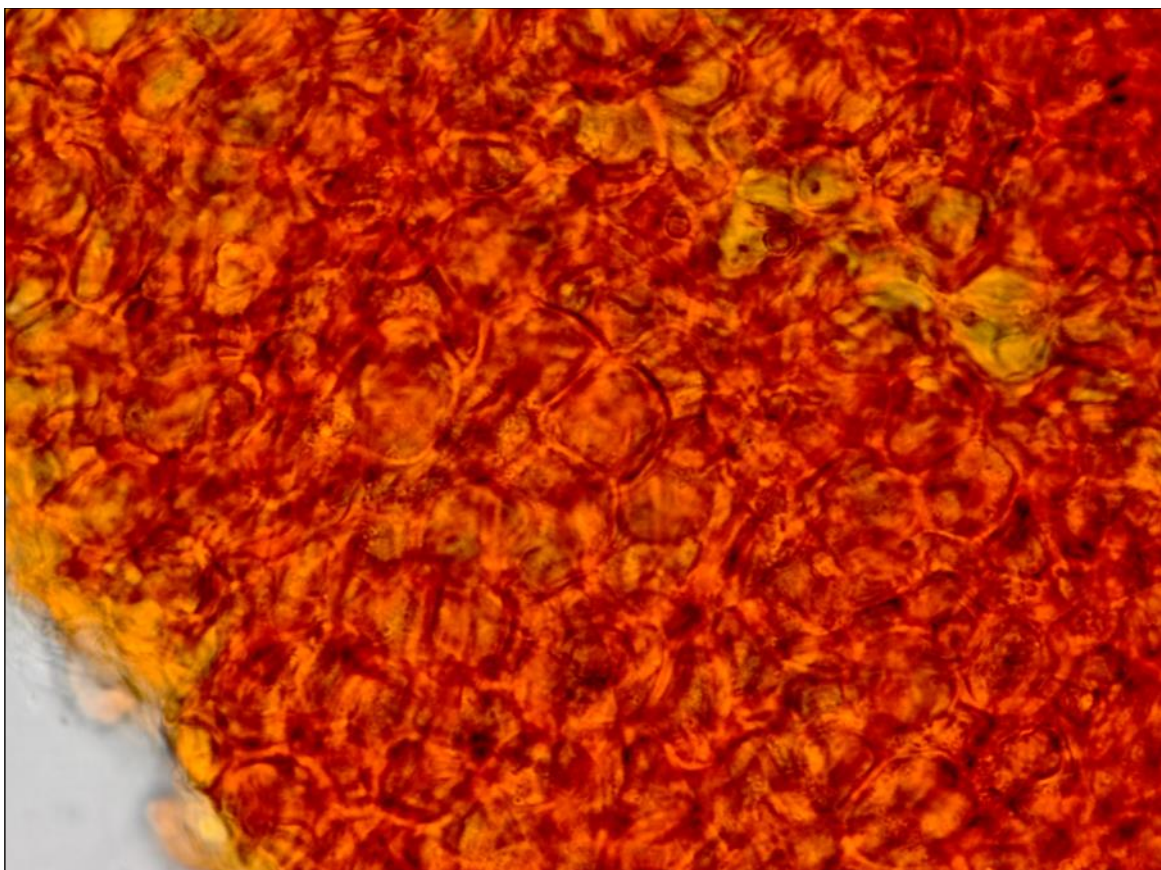


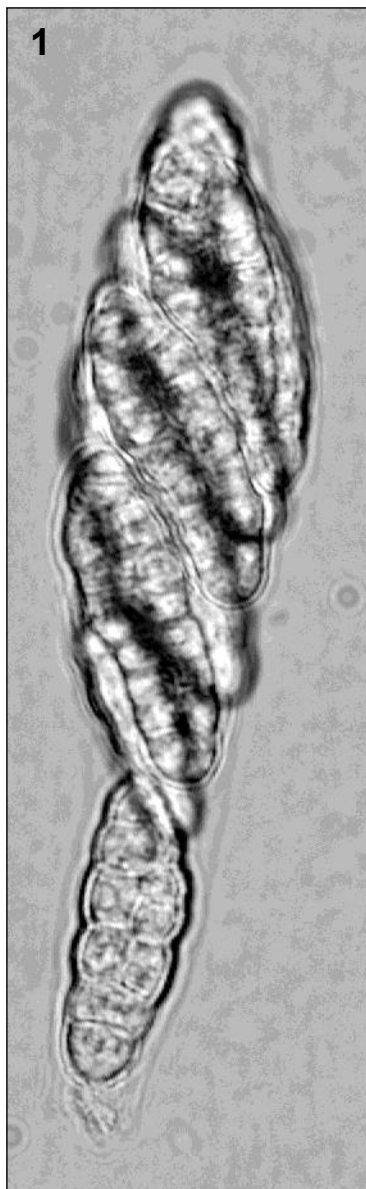
Top: In-situ *Tubercularia lateritia* synnemata among perithecia of the teleomorph, bar inner space length = 500 μ m

Bottom: Aqueous slide mt. of perithecia & anamorph, bar inner space length = 500 μ m

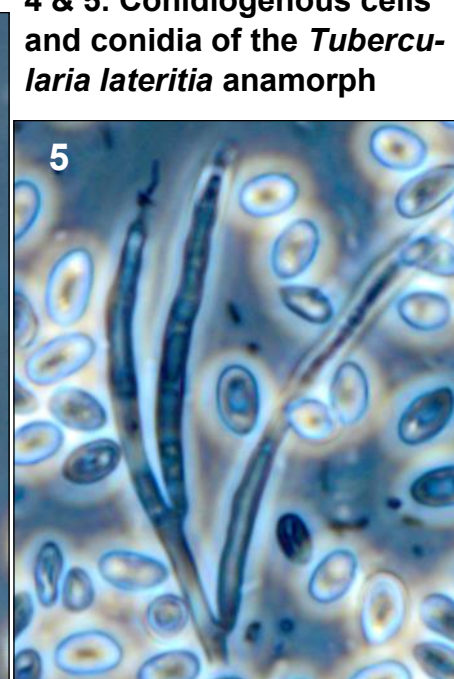
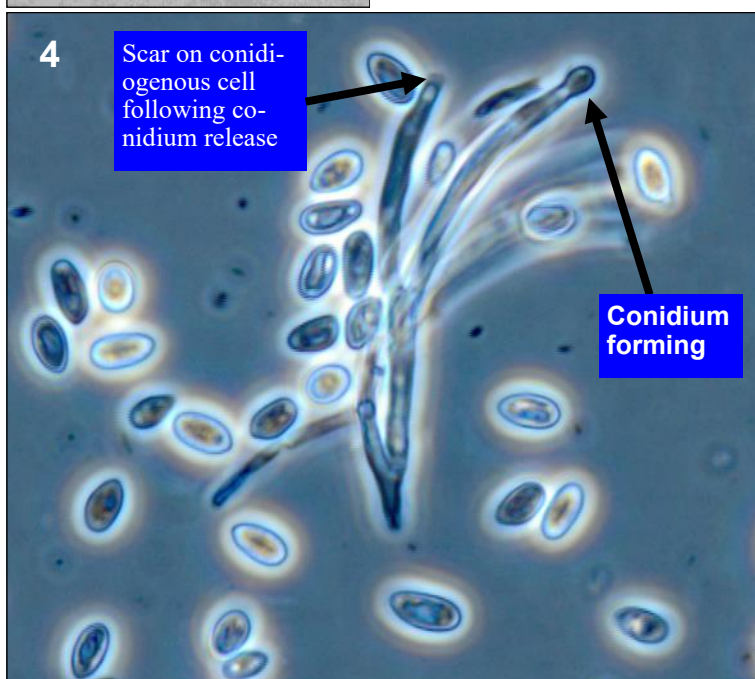


Top: Ostiole with bordering 'fringe' & nearby peridium in water mount
Bottom: Venter peridium in water mount, largest cell 15 μ m diameter





1. 8-spored ascus in water mount
 2. 8 free ascospores in water mount, lower left ascospore 37 X 10 μ m
 3. 1 older ascospore in water mount (34 X 10 μ m). The lack of cytoplasmic contents makes it easier to see the septa.



4 & 5. Conidiogenous cells and conidia of the *Tubercularia lateritia* anamorph