



New Zealand  
**GARDEN  
BIRD  
SURVEY**

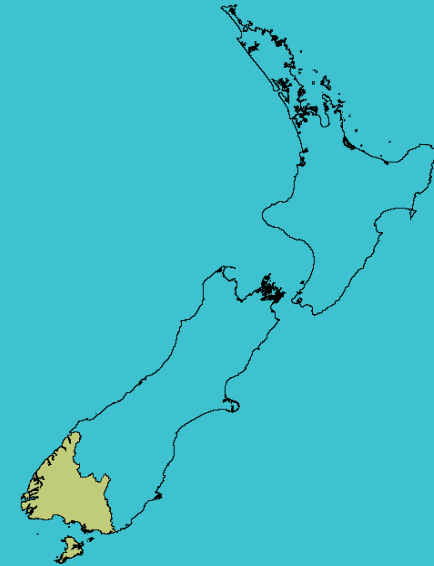
Summary report

## SOUTHLAND REGION

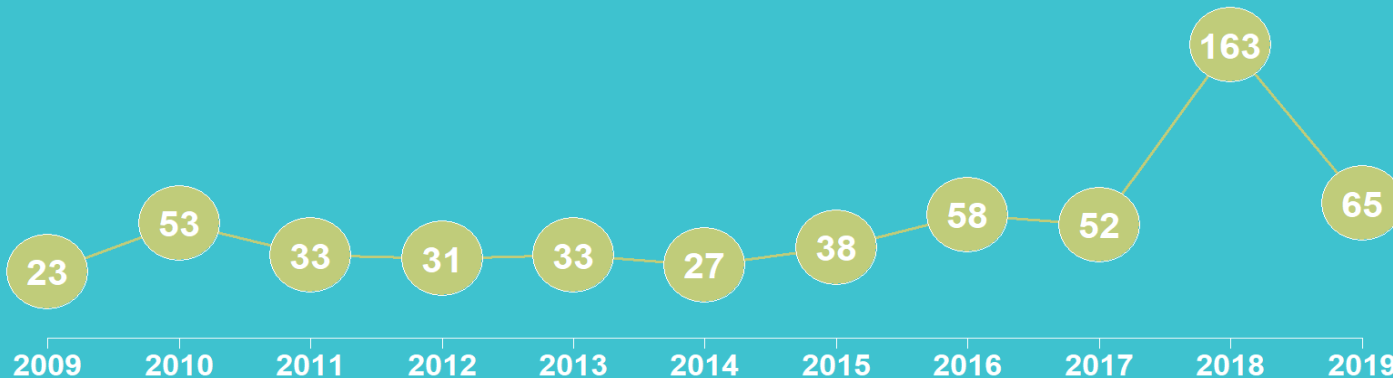
# 2019

## State of NZ Garden Birds

Te Āhua o ngā Manu o te Kāri i Aotearoa



### NUMBER OF SURVEYED GARDENS



Manaaki  
Whenua  
Landcare  
Research

We have estimated how bird counts have changed over the last 10– and 5–year periods in different regions, districts, and neighbourhoods across New Zealand for 14 common garden visitors – five native and nine introduced birds.

Thanks to all our volunteer bird counters, 35,786 garden surveys have been completed nationwide since 2009. We use specialised statistical tools to account for variation in sampling effort between regions, districts, and suburbs over time. We also account for variation in bird counts depending on whether the surveyed gardens were in a rural or urban setting and whether birds were fed or not. We also correct for the actual number of gardens in each area.

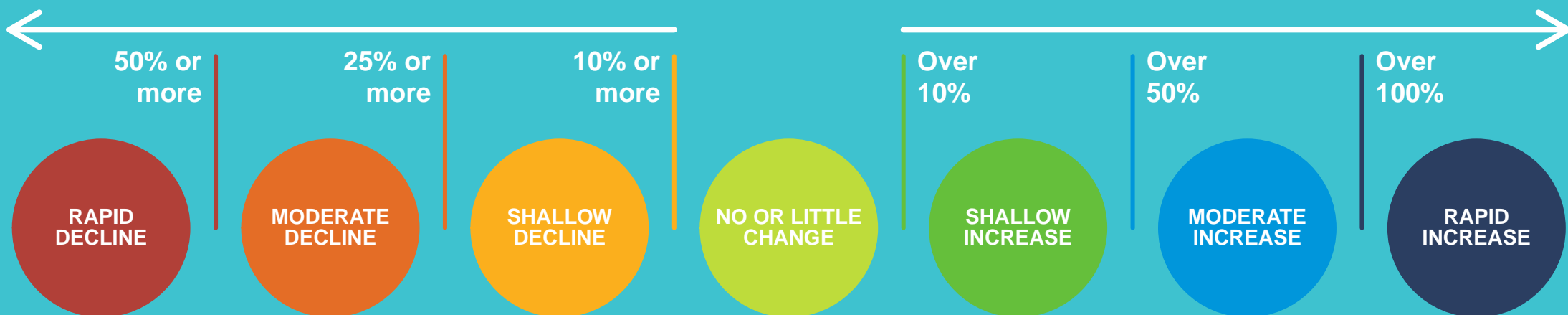
We then classify these changes according to their direction and size (see diagram below) to help us identify changes of potential concern or interest.

**How have  
bird counts  
changed?**

**Drawing attention to changes in counts  
that may be of concern or interest**

**Decline over 10 years**

**Increase over 10 years**

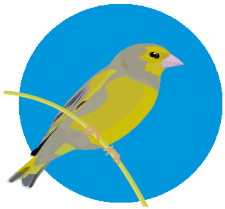


# SOUTHLAND | Greenfinch

## How have garden bird counts changed in this region?



Last 10 years  
2009–19



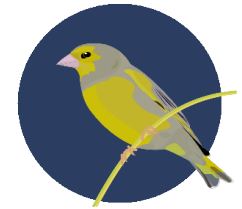
**MODERATE INCREASE  
REGIONALLY**



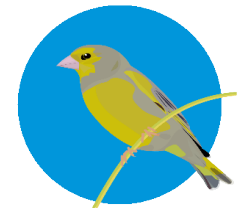
**MODERATE INCREASE  
NATIONALLY**



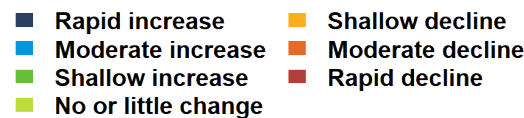
Last 5 years  
2014–19



**RAPID INCREASE  
REGIONALLY**



**MODERATE INCREASE  
NATIONALLY**

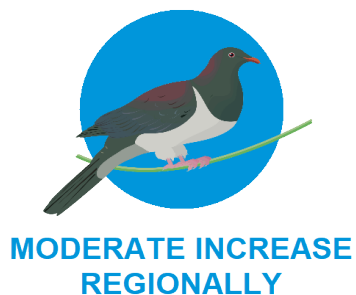


# SOUTHLAND | Kererū | Kererū

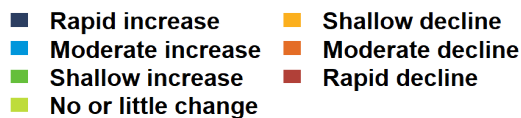
## How have garden bird counts changed in this region?



Last 10 years  
2009–19



Last 5 years  
2014–19

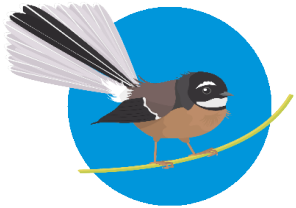


# SOUTHLAND | Fantail | Pīwaiwaka

## How have garden bird counts changed in this region?



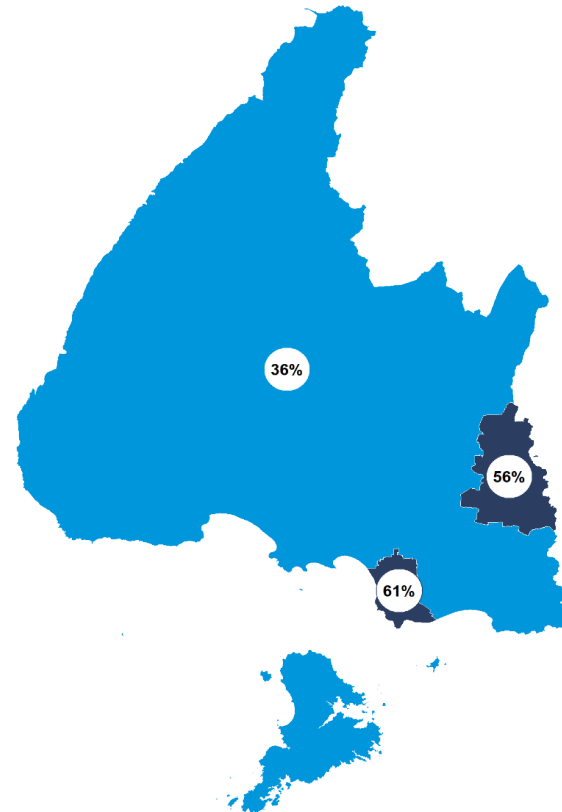
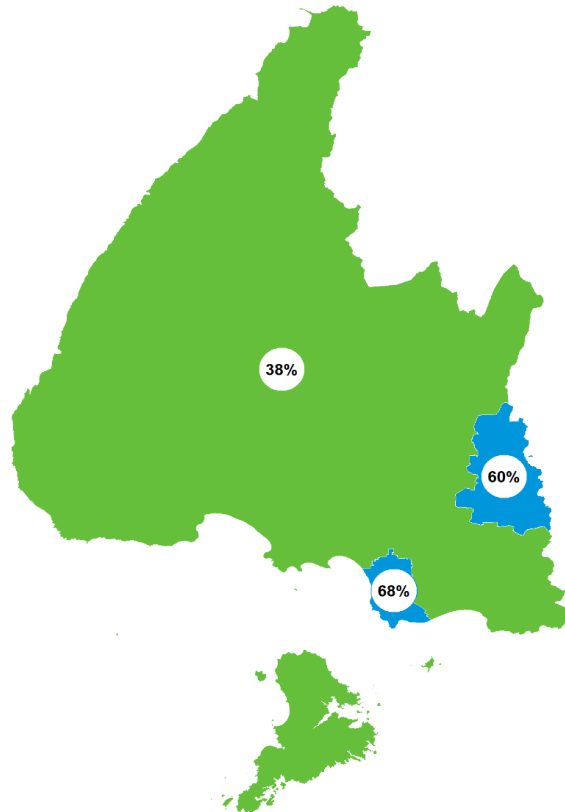
Last 10 years  
2009–19



**MODERATE INCREASE  
REGIONALLY**



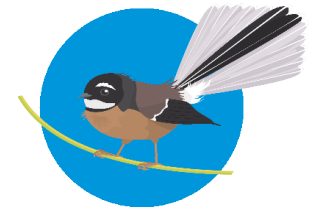
**SHALLOW INCREASE  
NATIONALLY**



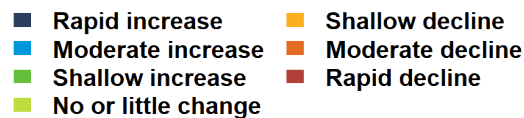
Last 5 years  
2014–19



**RAPID INCREASE  
REGIONALLY**



**MODERATE INCREASE  
NATIONALLY**



# SOUTHLAND | House sparrow | Tiu

## How have garden bird counts changed in this region?



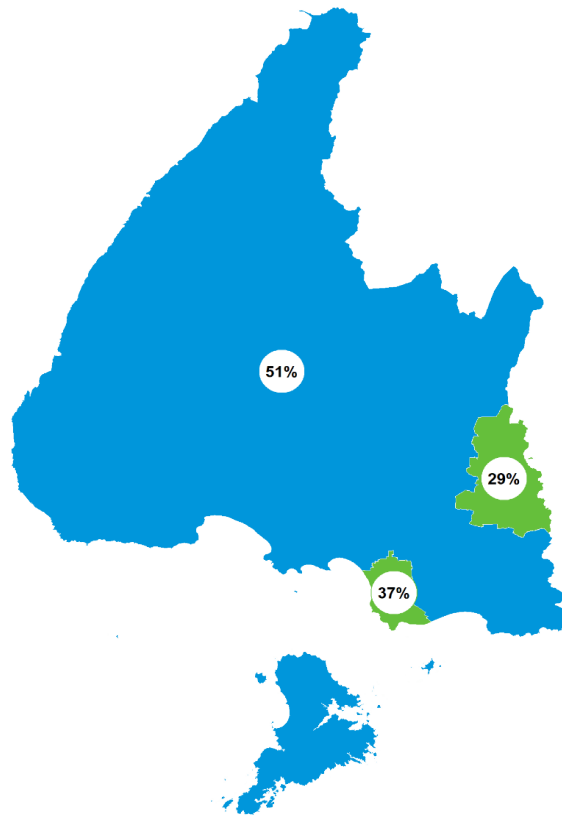
Last 10 years  
 2009–19



SHALLOW INCREASE  
 REGIONALLY



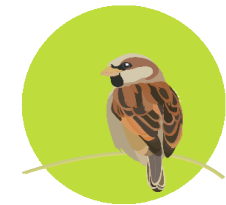
LITTLE OR NO CHANGE  
 NATIONALLY



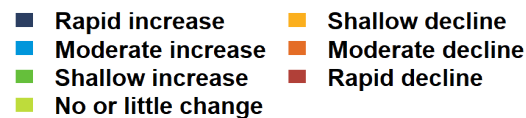
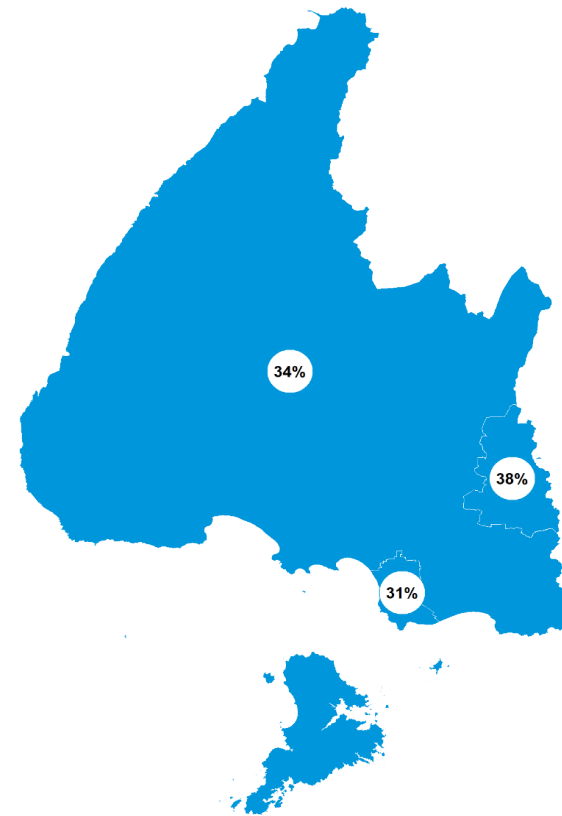
Last 5 years  
 2014–19



MODERATE INCREASE  
 REGIONALLY



LITTLE OR NO CHANGE  
 NATIONALLY



# SOUTHLAND | Tūī | Kōkō

## How have garden bird counts changed in this region?



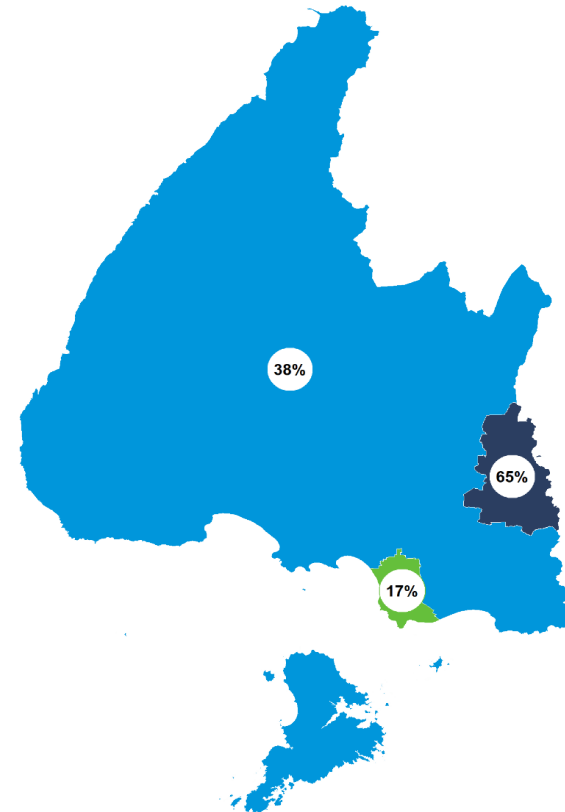
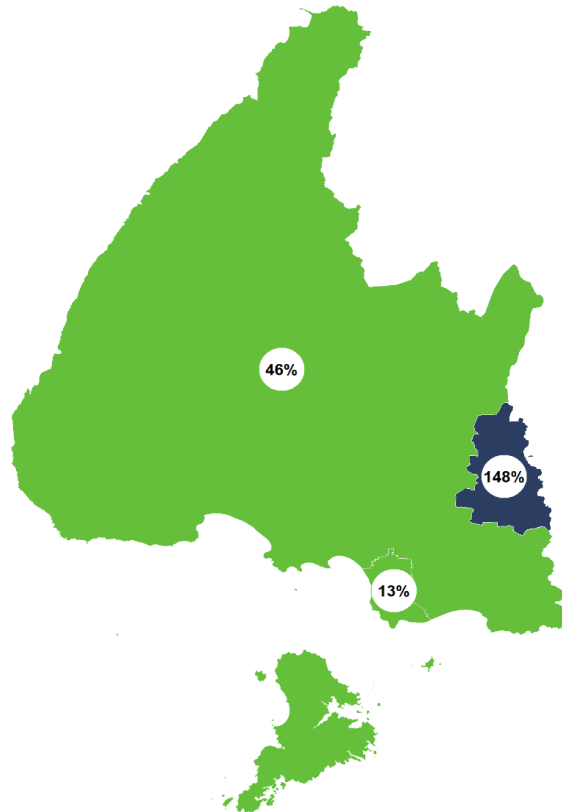
Last 10 years  
2009–19



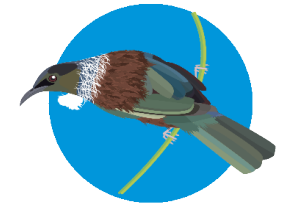
SHALLOW INCREASE  
REGIONALLY



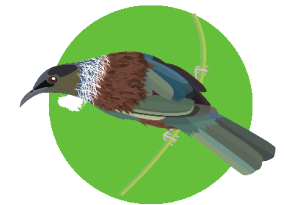
SHALLOW INCREASE  
NATIONALLY








Last 5 years  
2014–19



MODERATE INCREASE  
REGIONALLY



SHALLOW INCREASE  
NATIONALLY

- |   |  |
|---|--|
|  Rapid increase      |  Shallow decline  |
|  Moderate increase   |  Moderate decline |
|  Shallow increase    |  Rapid decline    |
|  No or little change |  |

# SOUTHLAND | Bellbird | Korimako

## How have garden bird counts changed in this region?



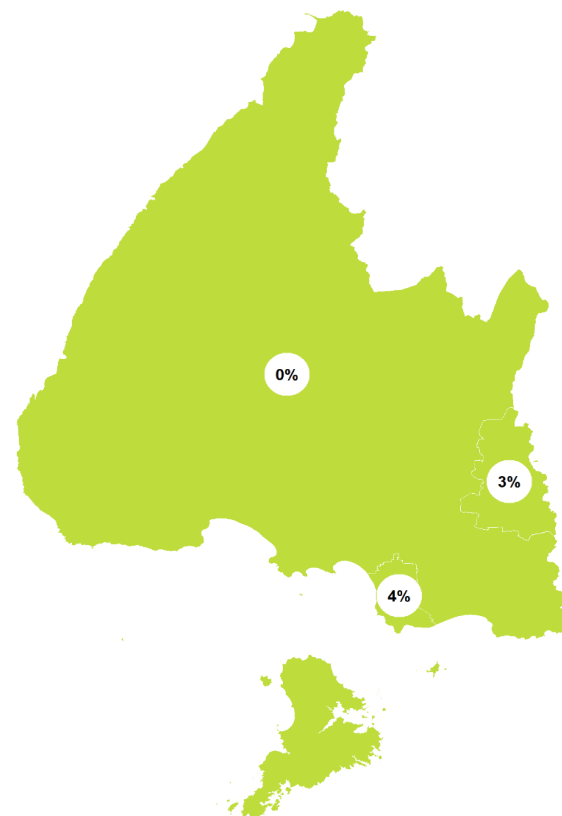
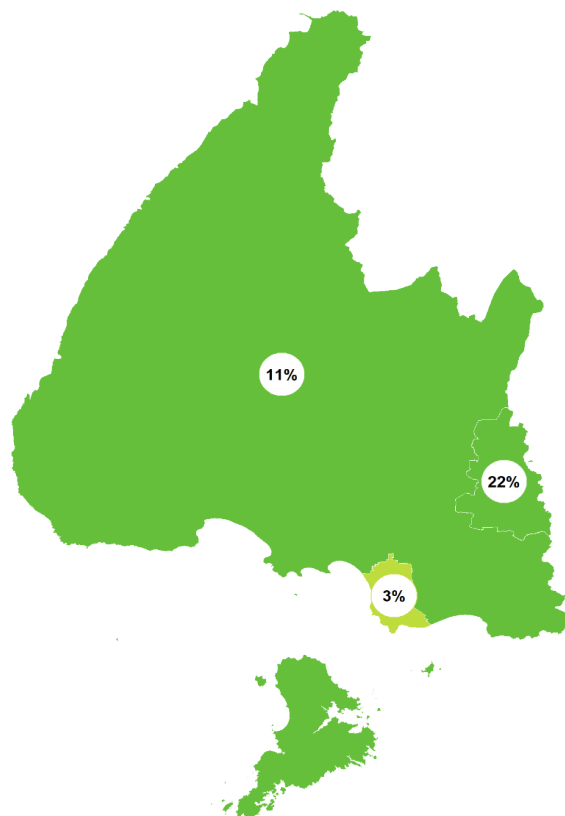
Last 10 years  
2009–19



LITTLE OR NO CHANGE  
REGIONALLY



SHALLOW INCREASE  
NATIONALLY



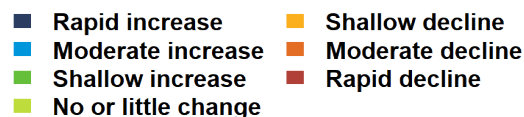
Last 5 years  
2014–19



LITTLE OR NO CHANGE  
REGIONALLY



SHALLOW INCREASE  
NATIONALLY





# SOUTHLAND | Blackbird | Manu pango

## How have garden bird counts changed in this region?



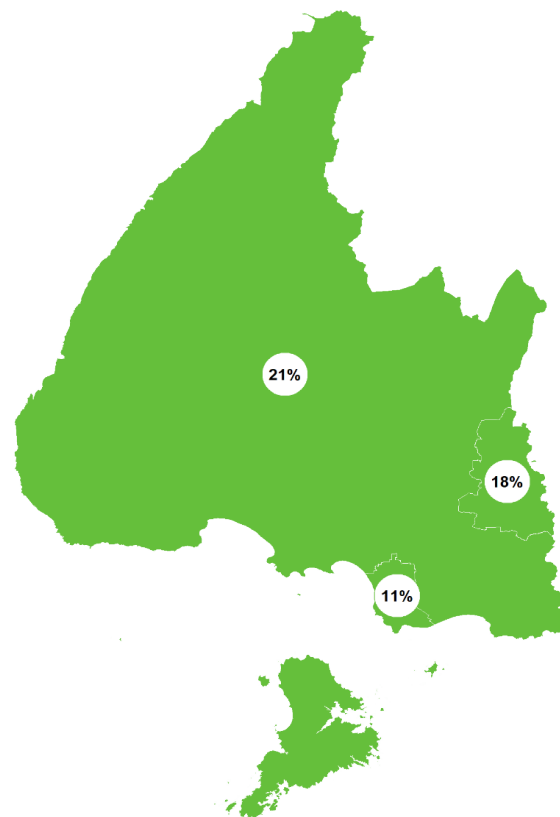
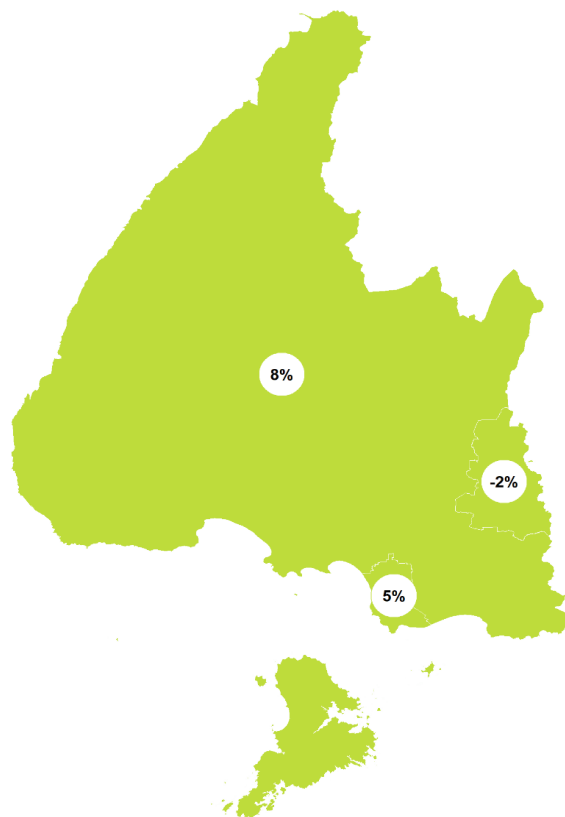
Last 10 years  
2009–19



LITTLE OR NO CHANGE  
REGIONALLY



LITTLE OR NO CHANGE  
NATIONALLY



Last 5 years  
2014–19



SHALLOW INCREASE  
REGIONALLY



SHALLOW INCREASE  
NATIONALLY



# SOUTHLAND | Starling | Tāringi

## How have garden bird counts changed in this region?



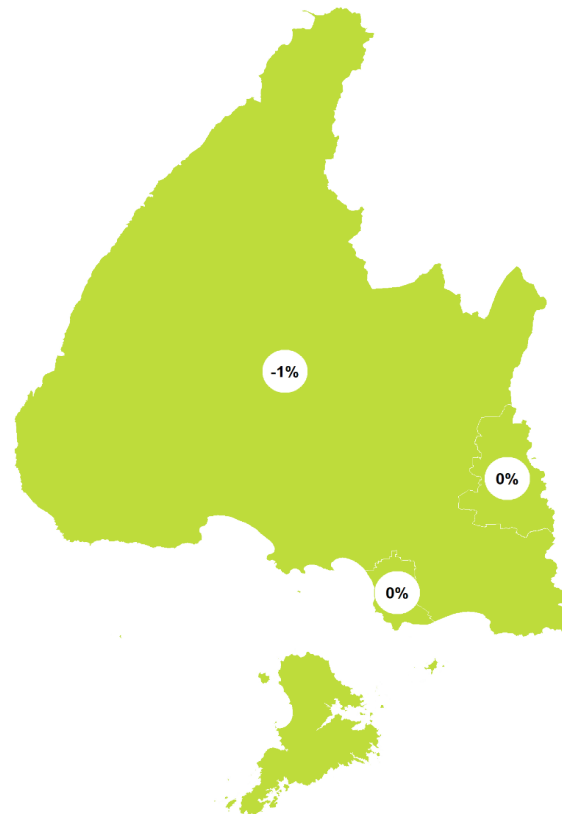
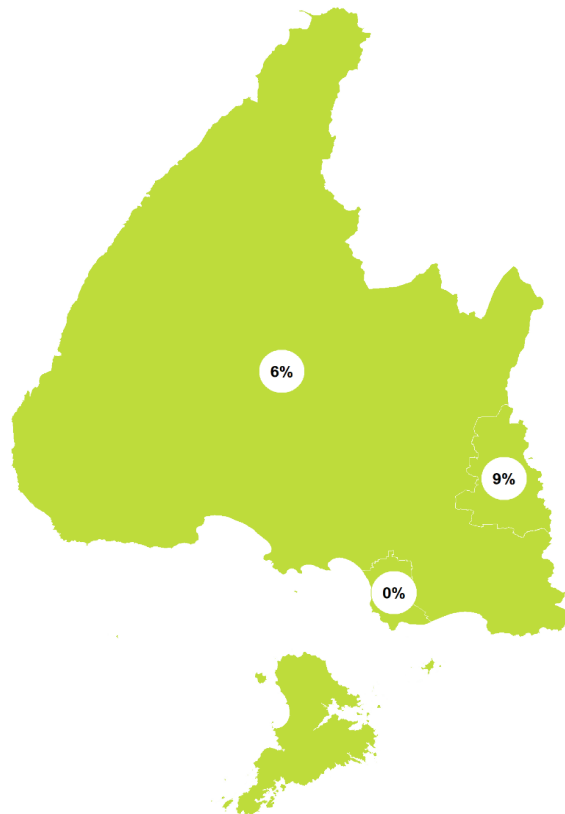
Last 10 years  
 2009–19



LITTLE OR NO CHANGE  
 REGIONALLY



MODERATE DECLINE  
 NATIONALLY



Last 5 years  
 2014–19



LITTLE OR NO CHANGE  
 REGIONALLY



SHALLOW DECLINE  
 NATIONALLY

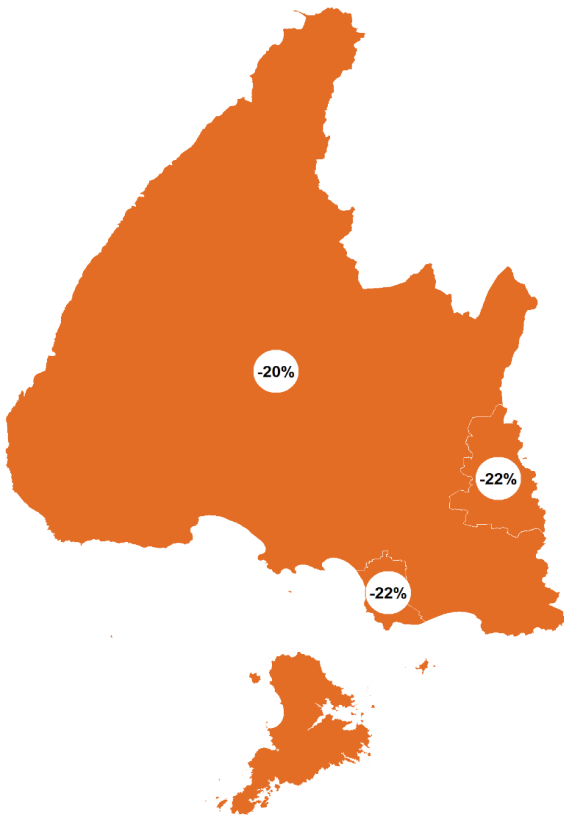
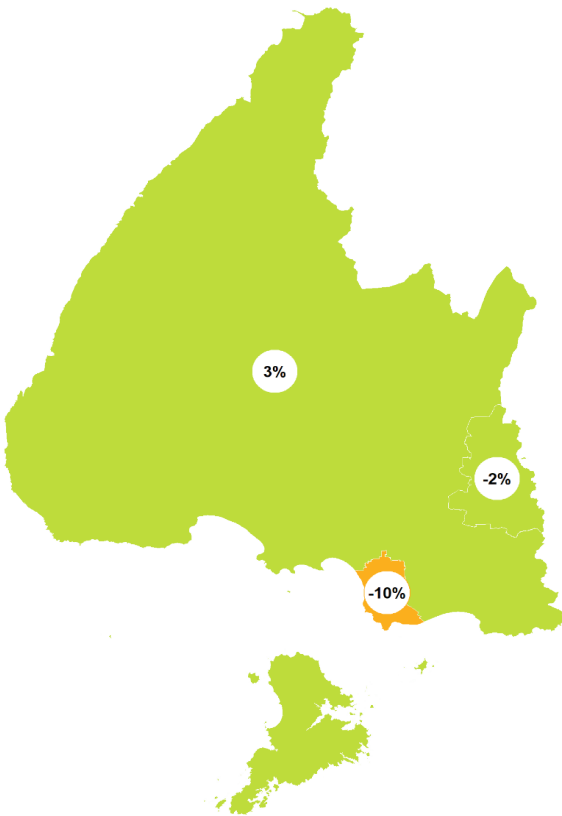
- |                       |                    |
|-----------------------|--------------------|
| ■ Rapid increase      | ■ Shallow decline  |
| ■ Moderate increase   | ■ Moderate decline |
| ■ Shallow increase    | ■ Rapid decline    |
| ■ No or little change |                    |

# SOUTHLAND | Dunnock

## How have garden bird counts changed in this region?



Last 10 years  
2009–19



Last 5 years  
2014–19



- Rapid increase
- Moderate increase
- Shallow increase
- No or little change
- Shallow decline
- Moderate decline
- Rapid decline

# SOUTHLAND | Chaffinch | Pahirini

## How have garden bird counts changed in this region?



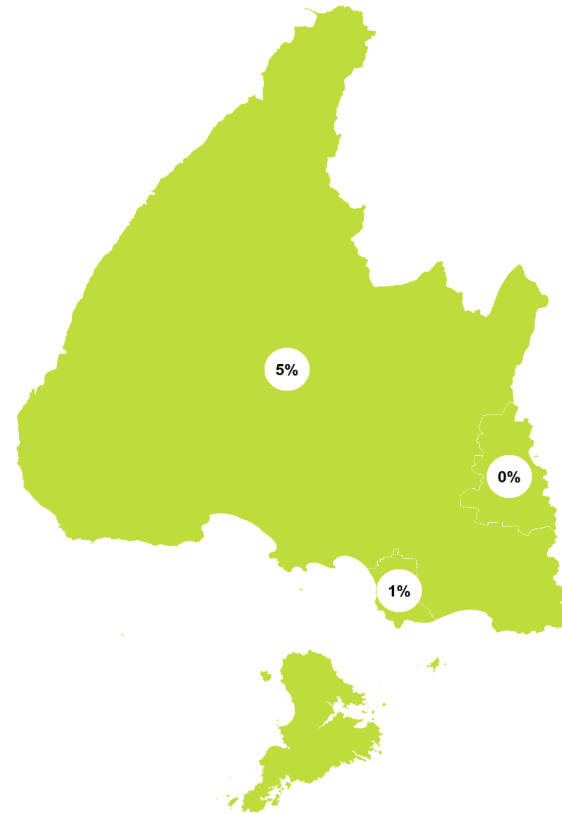
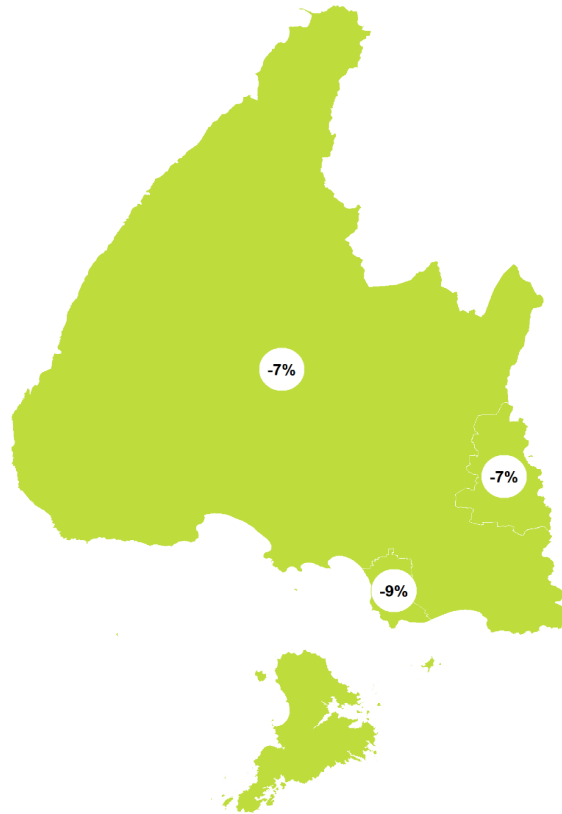
Last 10 years  
2009–19



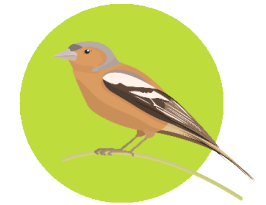
LITTLE OR NO CHANGE  
REGIONALLY



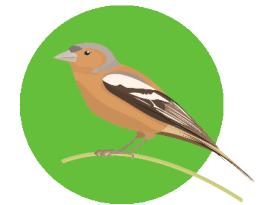
LITTLE OR NO CHANGE  
NATIONALLY



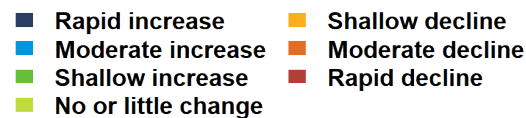
Last 5 years  
2014–19



LITTLE OR NO CHANGE  
REGIONALLY



SHALLOW INCREASE  
NATIONALLY

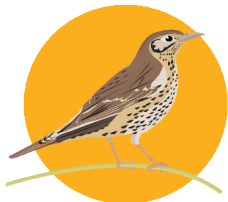


# SOUTHLAND | Song thrush

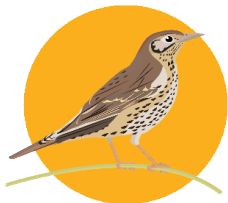
## How have garden bird counts changed in this region?



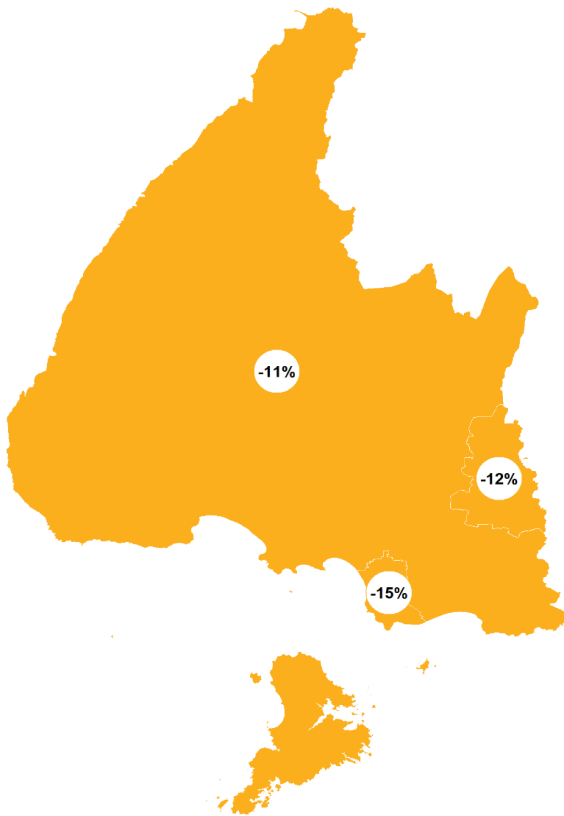
Last 10 years  
2009–19



SHALLOW DECLINE  
REGIONALLY



SHALLOW DECLINE  
NATIONALLY



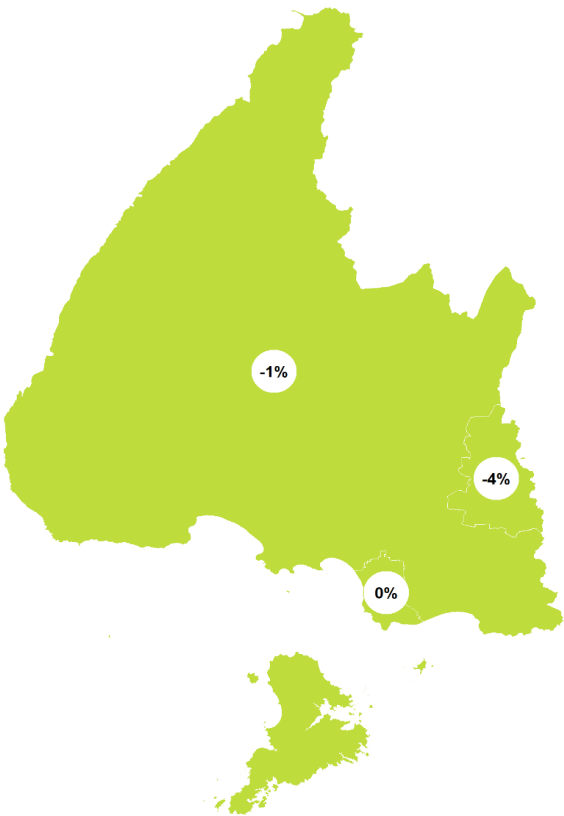
Last 5 years  
2014–19



LITTLE OR NO CHANGE  
REGIONALLY



LITTLE OR NO CHANGE  
NATIONALLY



- |                       |                    |
|-----------------------|--------------------|
| ■ Rapid increase      | ■ Shallow decline  |
| ■ Moderate increase   | ■ Moderate decline |
| ■ Shallow increase    | ■ Rapid decline    |
| ■ No or little change |                    |

# SOUTHLAND | Goldfinch

## How have garden bird counts changed in this region?



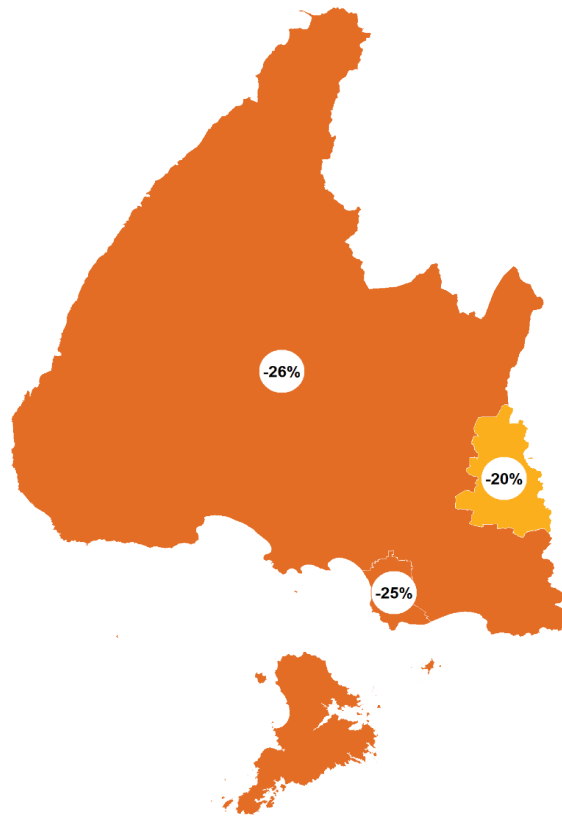
Last 10 years  
2009–19



**MODERATE DECLINE  
REGIONALLY**



**MODERATE DECLINE  
NATIONALLY**



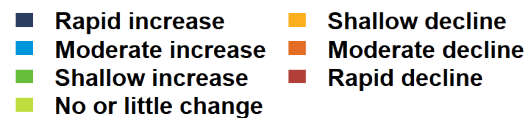
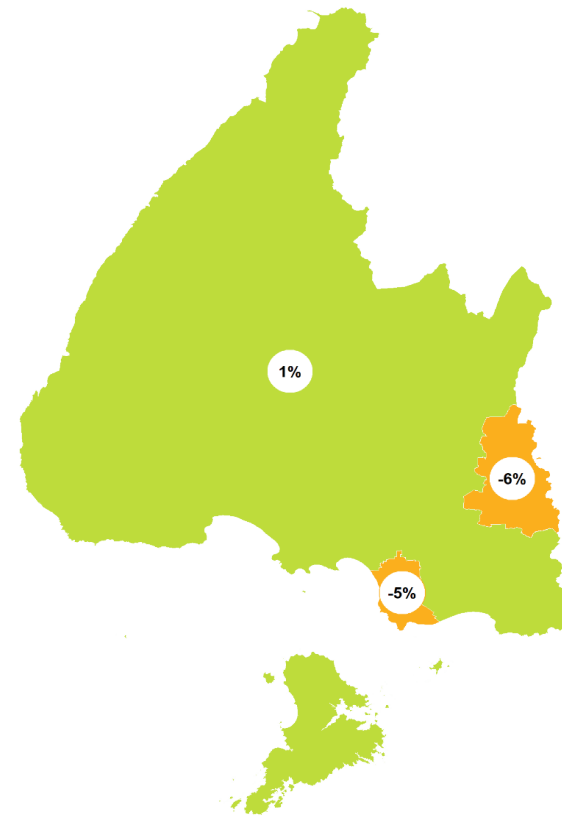
Last 5 years  
2014–19



**LITTLE OR NO CHANGE  
REGIONALLY**



**SHALLOW DECLINE  
NATIONALLY**

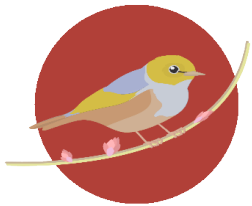


# SOUTHLAND | Silvereye | Tauhou

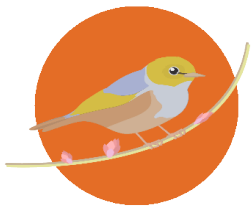
## How have garden bird counts changed in this region?



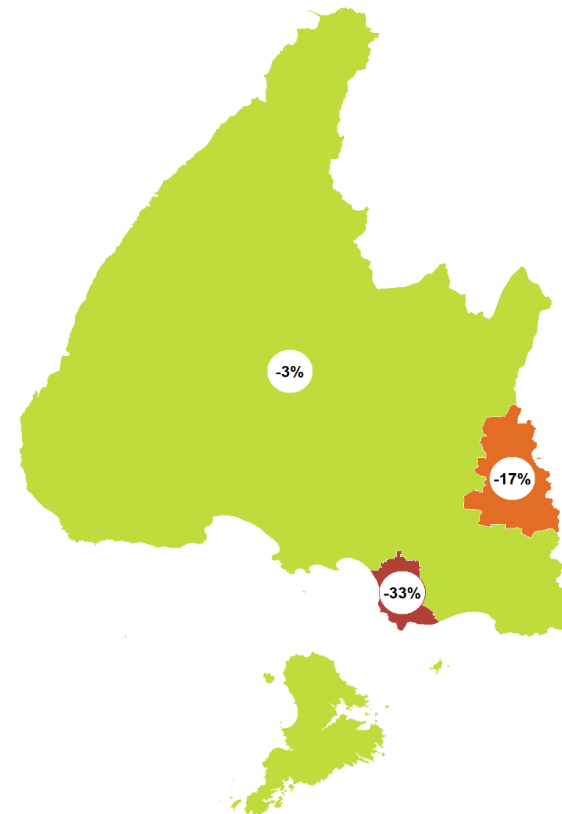
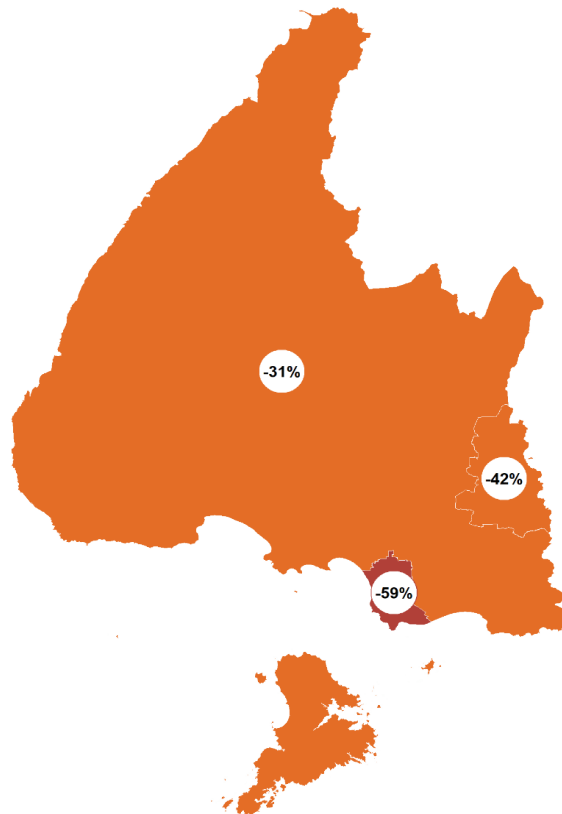
Last 10 years  
2009–19



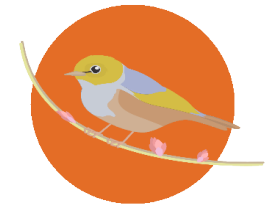
**RAPID DECLINE  
REGIONALLY**



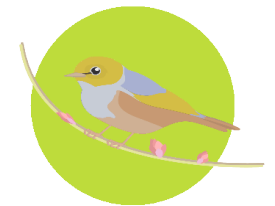
**MODERATE DECLINE  
NATIONALLY**








Last 5 years  
2014–19



**MODERATE DECLINE  
REGIONALLY**



**LITTLE OR NO CHANGE  
NATIONALLY**

- |   |  |
|---|--|
|  Rapid increase      |  Shallow decline  |
|  Moderate increase   |  Moderate decline |
|  Shallow increase    |  Rapid decline    |
|  No or little change |  |



New Zealand  
**GARDEN  
BIRD  
SURVEY**

**2020**  
27 June to 5 July

**Visit our webpage to learn more:**  
[gardenbirdssurvey.landcareresearch.co.nz](https://gardenbirdssurvey.landcareresearch.co.nz)

This report should be cited as: Brandt AJ, MacLeod CJ, Howard S, Gormley AM, Spurr EB. 2020.  
State of NZ Garden Birds 2019 | Te Āhua o ngā Manu o te Kāri i Aotearoa.  
Manaaki Whenua – Landcare Research, Lincoln. ISBN 978-0-947525-67-5.



**Manaaki  
Whenua**  
Landcare  
Research