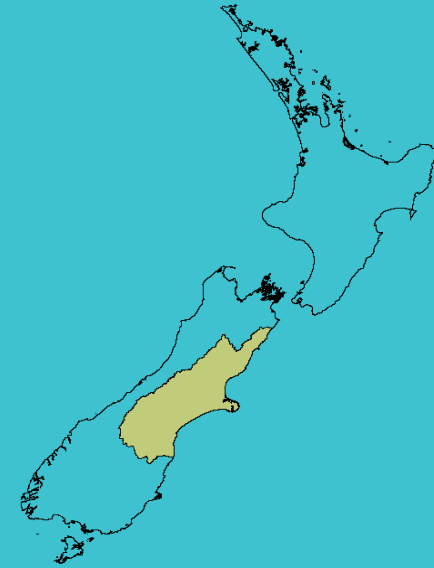




New Zealand
**GARDEN
BIRD
SURVEY**



Summary report

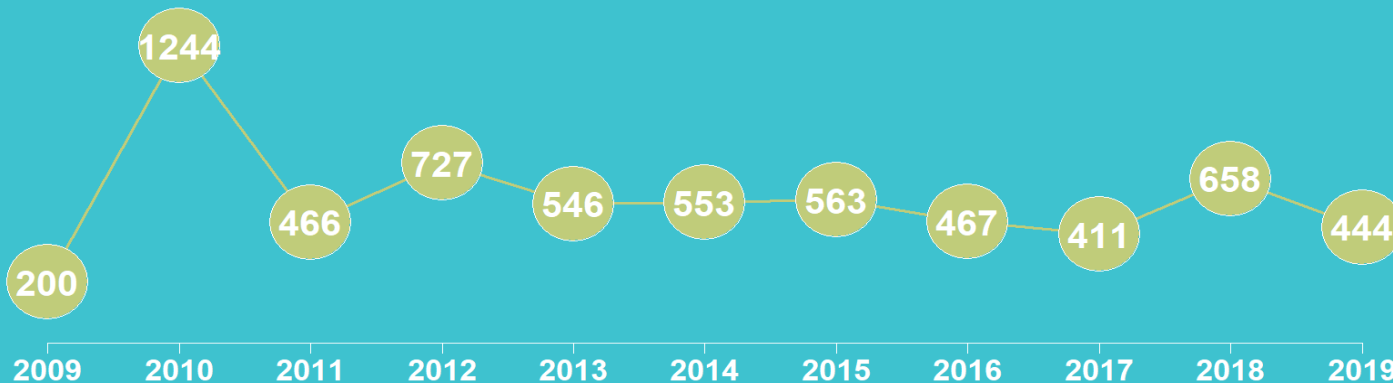
CANTERBURY REGION

2019

State of NZ Garden Birds

Te Āhua o ngā Manu o te Kāri i Aotearoa

NUMBER OF SURVEYED GARDENS



Manaaki
Whenua
Landcare
Research

We have estimated how bird counts have changed over the last 10– and 5–year periods in different regions, districts, and neighbourhoods across New Zealand for 14 common garden visitors – five native and nine introduced birds.

Thanks to all our volunteer bird counters, 35,786 garden surveys have been completed nationwide since 2009. We use specialised statistical tools to account for variation in sampling effort between regions, districts, and suburbs over time. We also account for variation in bird counts depending on whether the surveyed gardens were in a rural or urban setting and whether birds were fed or not. We also correct for the actual number of gardens in each area.

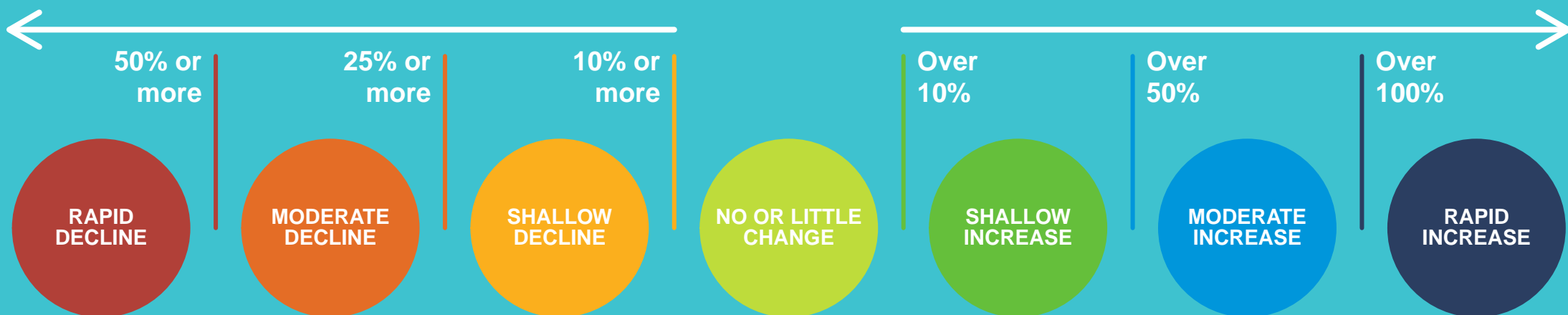
We then classify these changes according to their direction and size (see diagram below) to help us identify changes of potential concern or interest.

**How have
bird counts
changed?**

**Drawing attention to changes in counts
that may be of concern or interest**

Decline over 10 years

Increase over 10 years

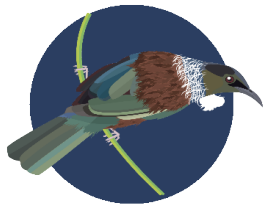


CANTERBURY | Tūī | Kōkō

How have garden bird counts changed in this region?



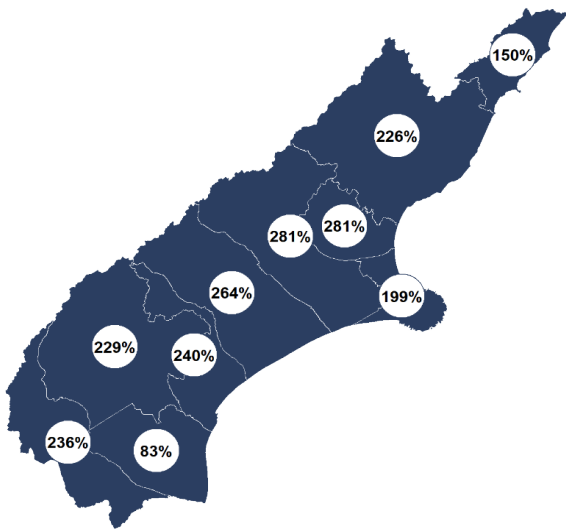
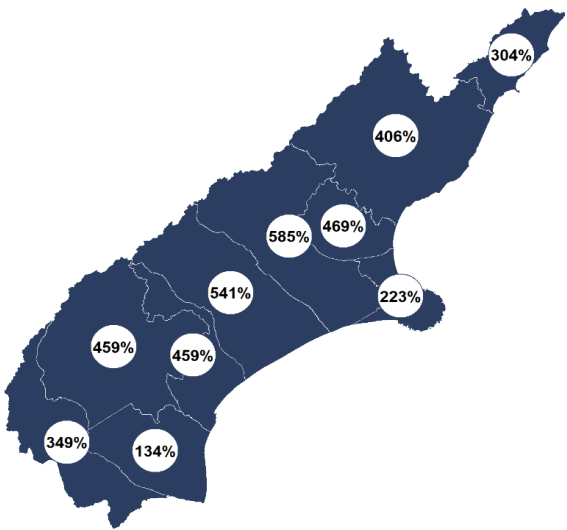
Last 10 years
2009–19



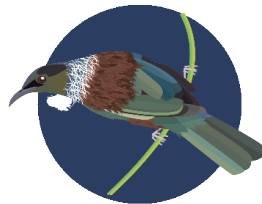
**RAPID INCREASE
REGIONALLY**



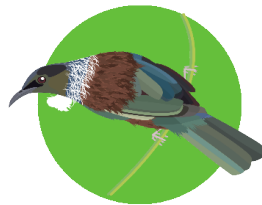
**SHALLOW INCREASE
NATIONALLY**



Last 5 years
2014–19



**RAPID INCREASE
REGIONALLY**



**SHALLOW INCREASE
NATIONALLY**

- | | |
|------------------------------------------------------------|-------------------------------------------------------|
| ■ Rapid increase | ■ Shallow decline |
| ■ Moderate increase | ■ Moderate decline |
| ■ Shallow increase | ■ Rapid decline |
| ■ No or little change | |

CANTERBURY | Fantail | Pīwaiwaka

How have garden bird counts changed in this region?



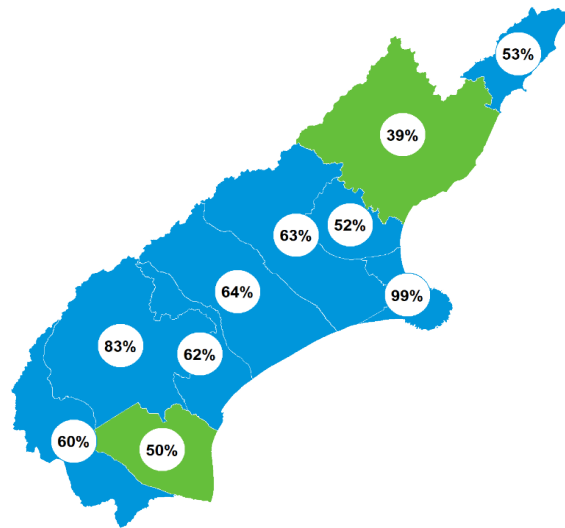
Last 10 years
2009–19



**MODERATE INCREASE
REGIONALLY**



**SHALLOW INCREASE
NATIONALLY**



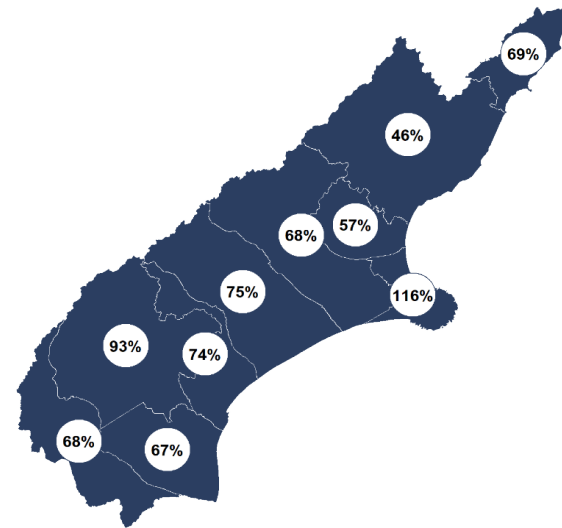
Last 5 years
2014–19



**RAPID INCREASE
REGIONALLY**



**MODERATE INCREASE
NATIONALLY**



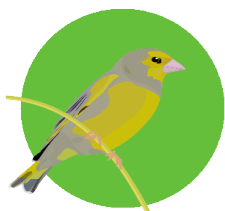
- | | |
|---------------------------------------------------------------|-------------------------------------------------------|
| ■ Rapid increase | ■ Shallow decline |
| ■ Moderate increase | ■ Moderate decline |
| ■ Shallow increase | ■ Rapid decline |
| ■ No or little change | |

CANTERBURY | Greenfinch

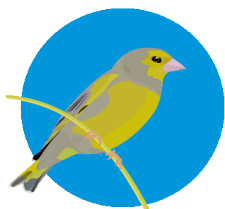
How have garden bird counts changed in this region?



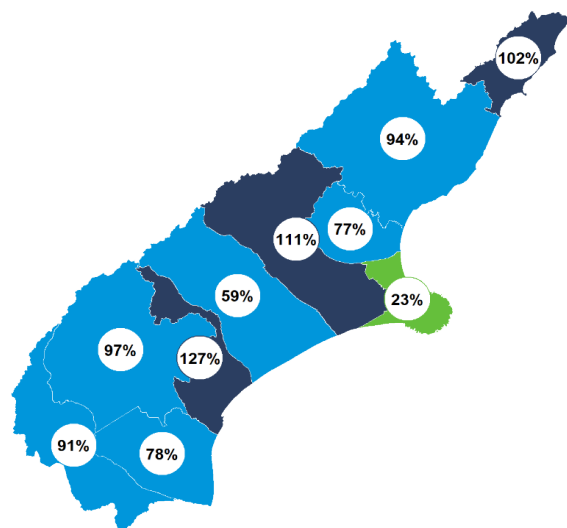
Last 10 years
2009–19



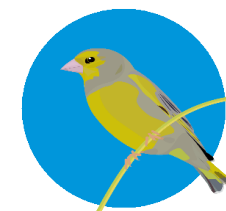
SHALLOW INCREASE
REGIONALLY



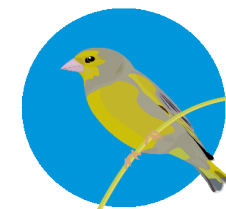
MODERATE INCREASE
NATIONALLY



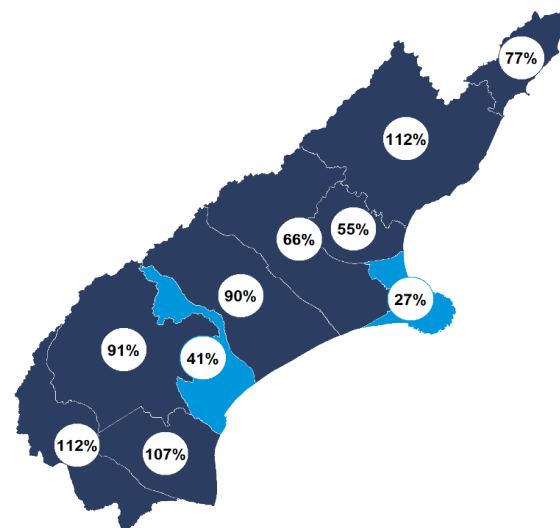
Last 5 years
2014–19



MODERATE INCREASE
REGIONALLY



MODERATE INCREASE
NATIONALLY



■ Rapid increase	■ Shallow decline
■ Moderate increase	■ Moderate decline
■ Shallow increase	■ Rapid decline
■ No or little change	

CANTERBURY | House sparrow | Tiu

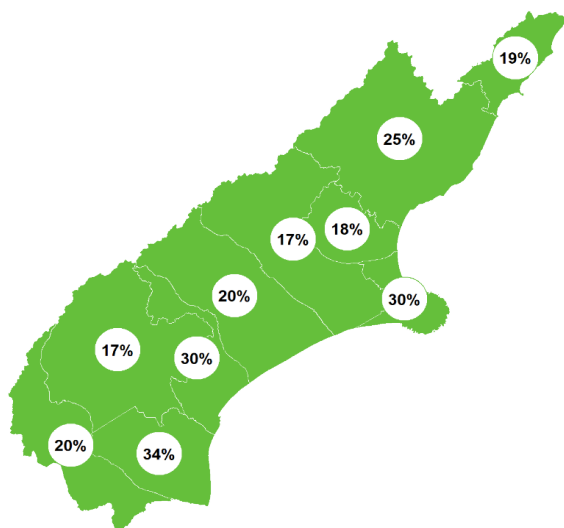
How have garden bird counts changed in this region?



Last 10 years
2009–19



SHALLOW INCREASE
REGIONALLY

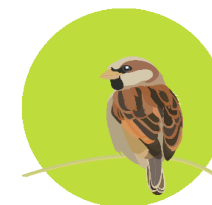
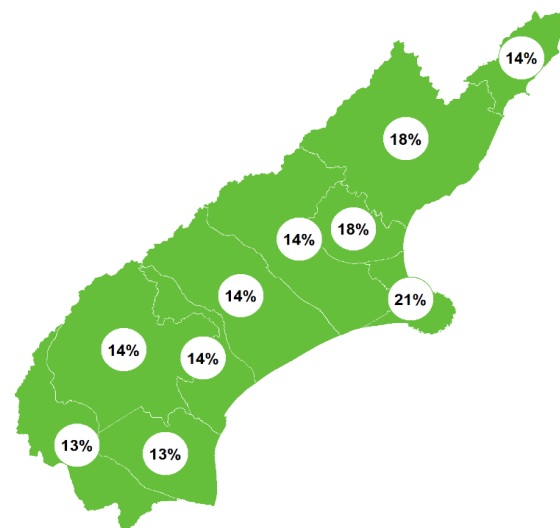


LITTLE OR NO CHANGE
NATIONALLY

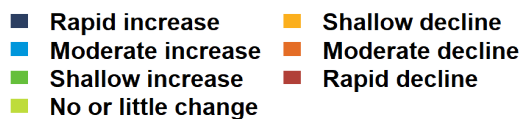
Last 5 years
2014–19



SHALLOW INCREASE
REGIONALLY



LITTLE OR NO CHANGE
NATIONALLY

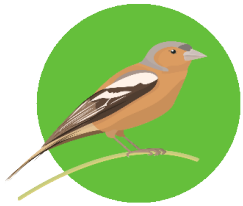


CANTERBURY | Chaffinch | Pahirini

How have garden bird counts changed in this region?



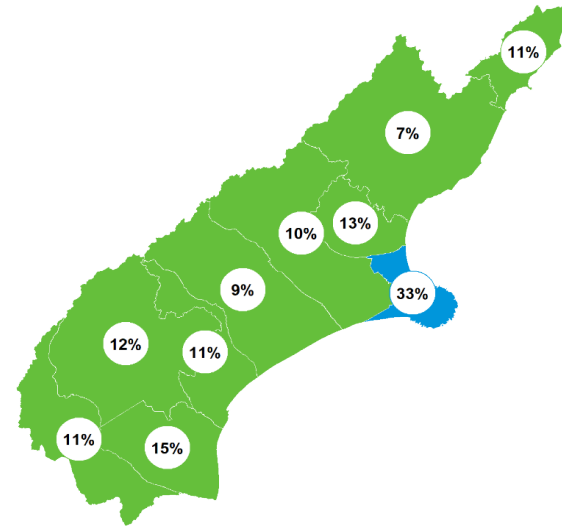
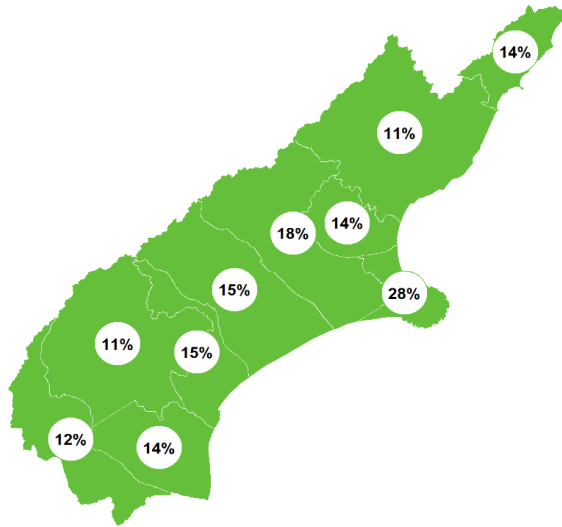
Last 10 years
2009–19



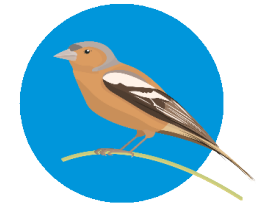
SHALLOW INCREASE
REGIONALLY



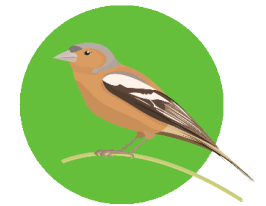
LITTLE OR NO CHANGE
NATIONALLY



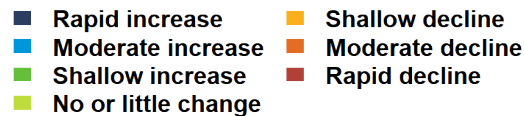
Last 5 years
2014–19



MODERATE INCREASE
REGIONALLY



SHALLOW INCREASE
NATIONALLY

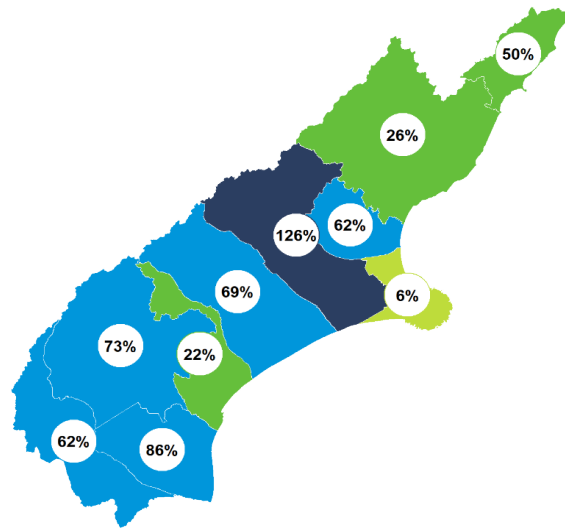


CANTERBURY | Kererū | Kererū

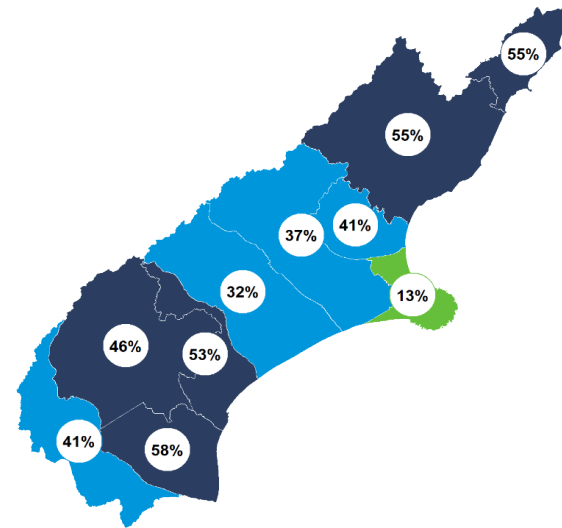
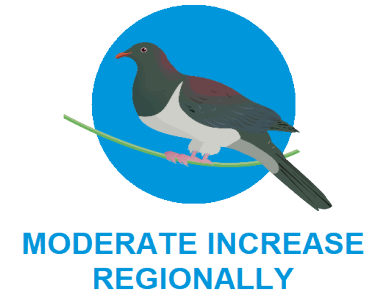
How have garden bird counts changed in this region?










Last 10 years
2009–19



Last 5 years
2014–19



- | | |
|---------------------------------------------------------------------------------------------------------|--------------------------------------------------------------------------------------------------------|
|  Rapid increase |  Shallow decline |
|  Moderate increase |  Moderate decline |
|  Shallow increase |  Rapid decline |
|  No or little change | |

CANTERBURY | Bellbird | Korimako

How have garden bird counts changed in this region?



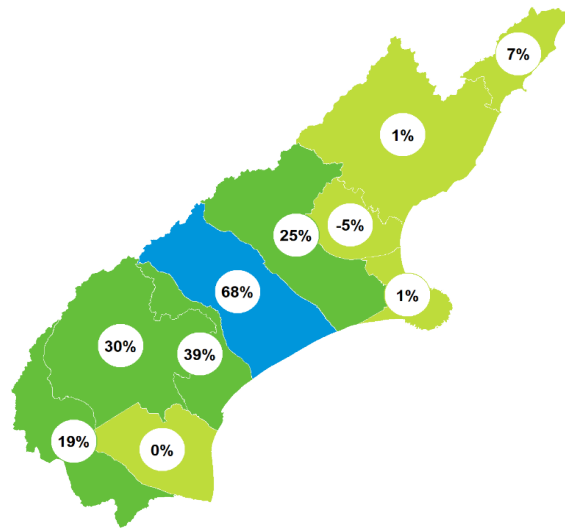
Last 10 years
2009–19



LITTLE OR NO CHANGE
REGIONALLY



SHALLOW INCREASE
NATIONALLY



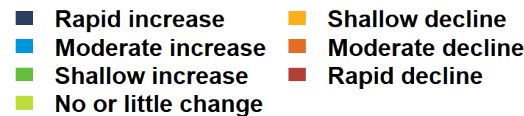
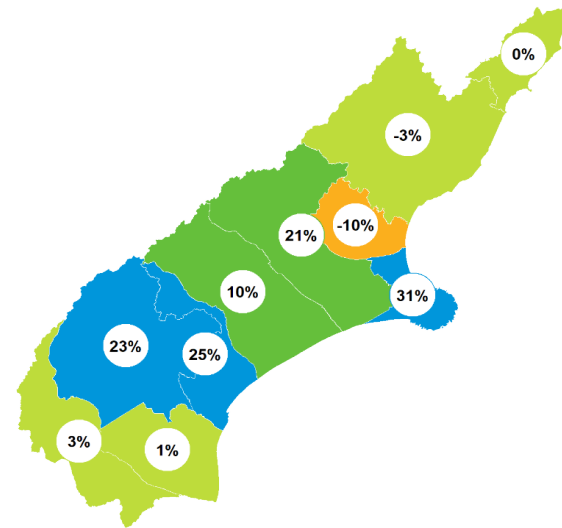
Last 5 years
2014–19



SHALLOW INCREASE
REGIONALLY



SHALLOW INCREASE
NATIONALLY



CANTERBURY | Blackbird | Manu pango

How have garden bird counts changed in this region?



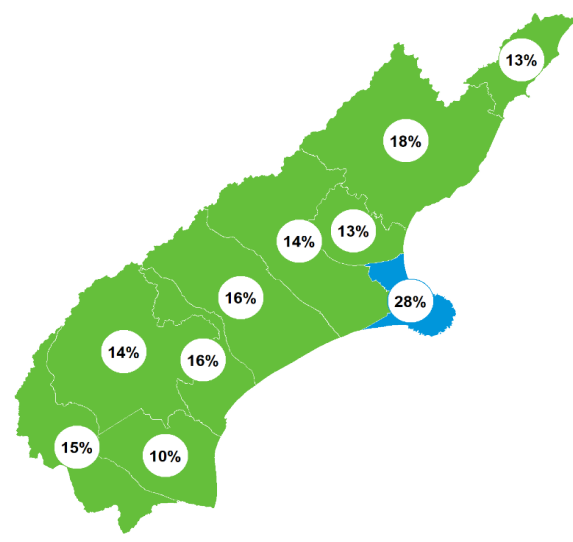
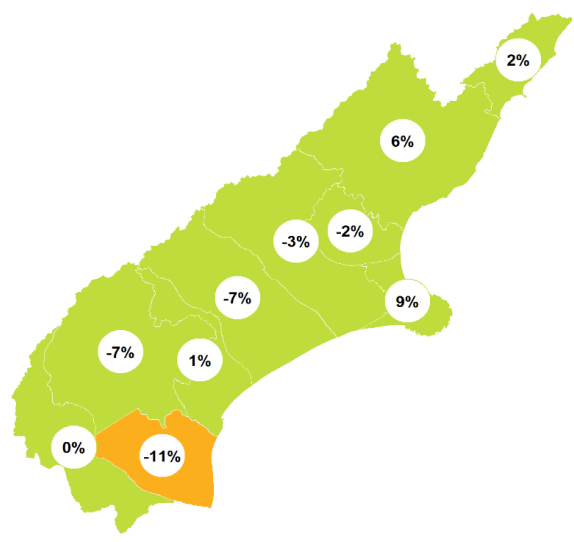
Last 10 years
 2009–19



LITTLE OR NO CHANGE
 REGIONALLY



LITTLE OR NO CHANGE
 NATIONALLY










Last 5 years
 2014–19



MODERATE INCREASE
 REGIONALLY



SHALLOW INCREASE
 NATIONALLY

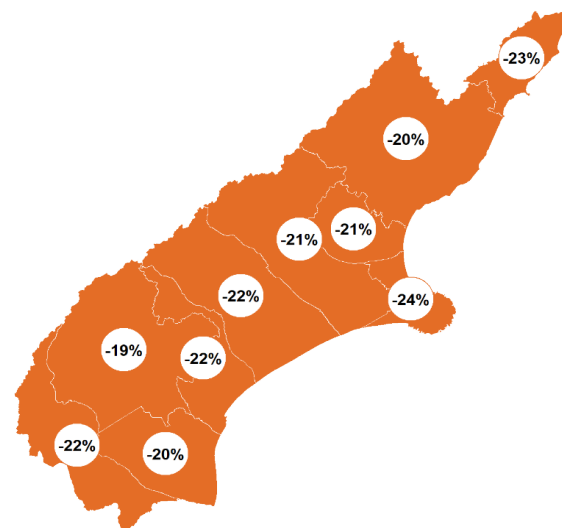
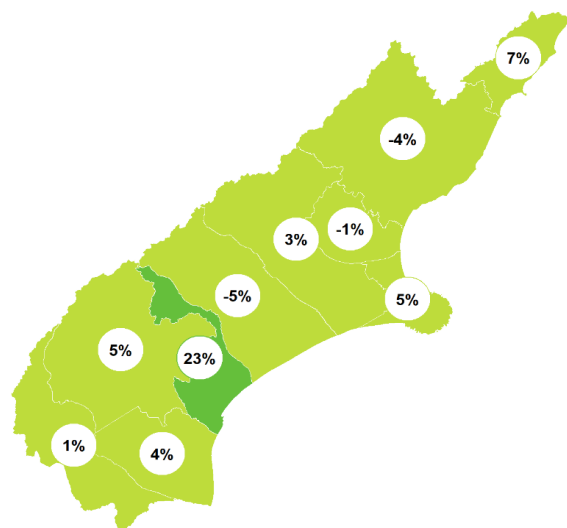
-  Rapid increase
-  Moderate increase
-  Shallow increase
-  No or little change
-  Shallow decline
-  Moderate decline
-  Rapid decline

CANTERBURY | Dunnock

How have garden bird counts changed in this region?



Last 10 years
2009–19



Last 5 years
2014–19



CANTERBURY | Goldfinch

How have garden bird counts changed in this region?



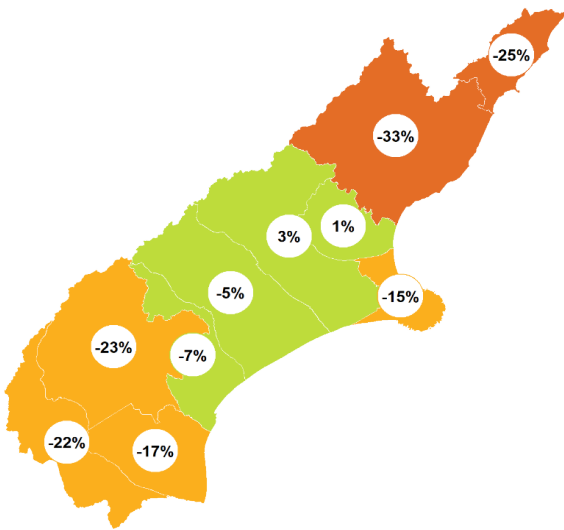
Last 10 years
2009–19



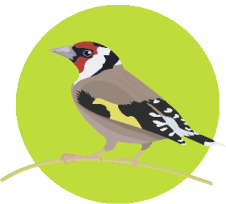
SHALLOW DECLINE
REGIONALLY



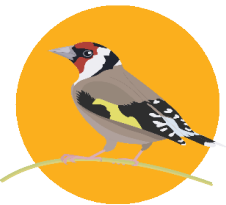
MODERATE DECLINE
NATIONALLY



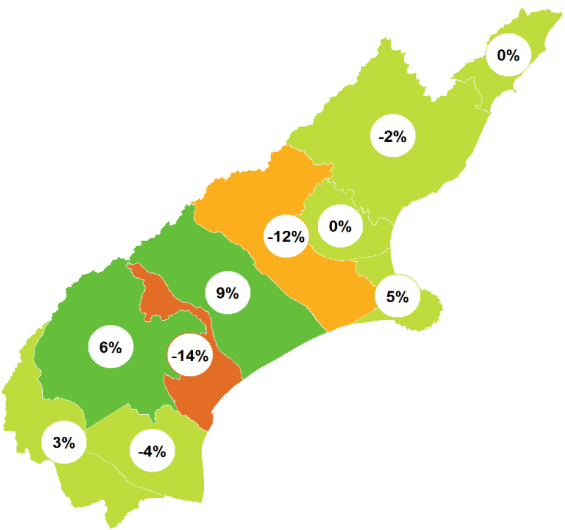
Last 5 years
2014–19










LITTLE OR NO CHANGE
REGIONALLY



SHALLOW DECLINE
NATIONALLY



- | | |
|---------------------------------------------------------------------------------------------------------|--------------------------------------------------------------------------------------------------------|
|  Rapid increase |  Shallow decline |
|  Moderate increase |  Moderate decline |
|  Shallow increase |  Rapid decline |
|  No or little change | |

CANTERBURY | Starling | Tāringi

How have garden bird counts changed in this region?



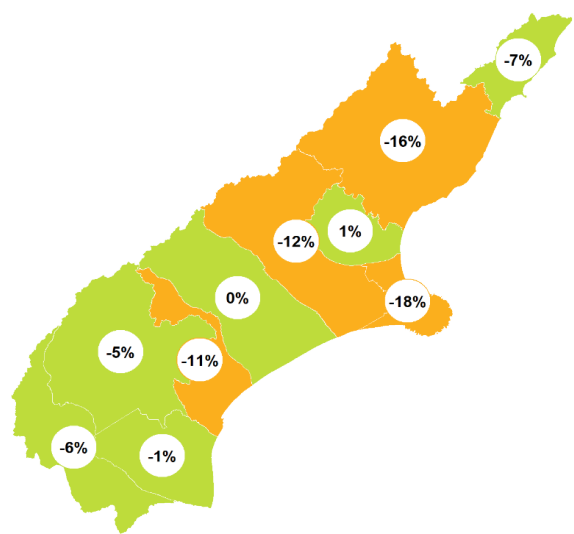
Last 10 years
2009–19



SHALLOW DECLINE
REGIONALLY



MODERATE DECLINE
NATIONALLY



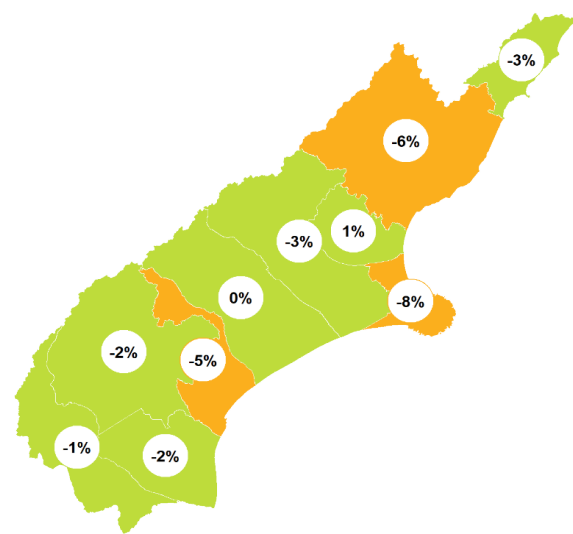
Last 5 years
2014–19



SHALLOW DECLINE
REGIONALLY



SHALLOW DECLINE
NATIONALLY



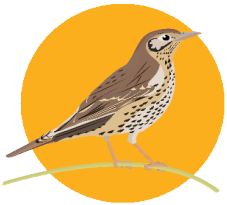
- Rapid increase
- Moderate increase
- Shallow increase
- No or little change
- Shallow decline
- Moderate decline
- Rapid decline

CANTERBURY | Song thrush

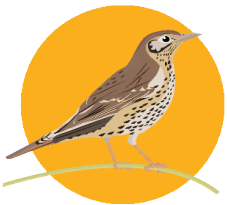
How have garden bird counts changed in this region?



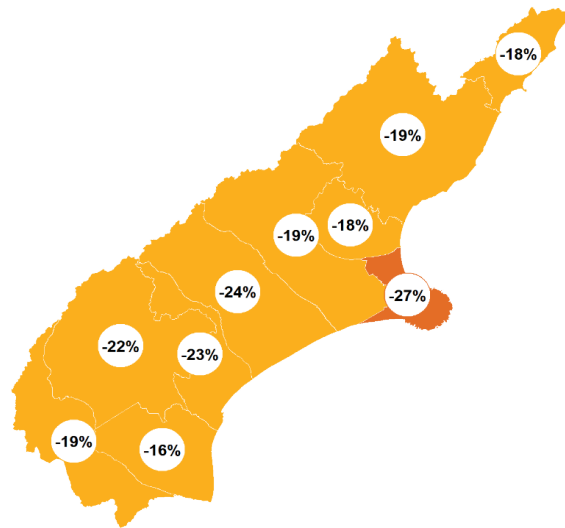
Last 10 years
2009–19



SHALLOW DECLINE
REGIONALLY



SHALLOW DECLINE
NATIONALLY



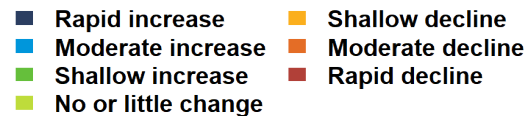
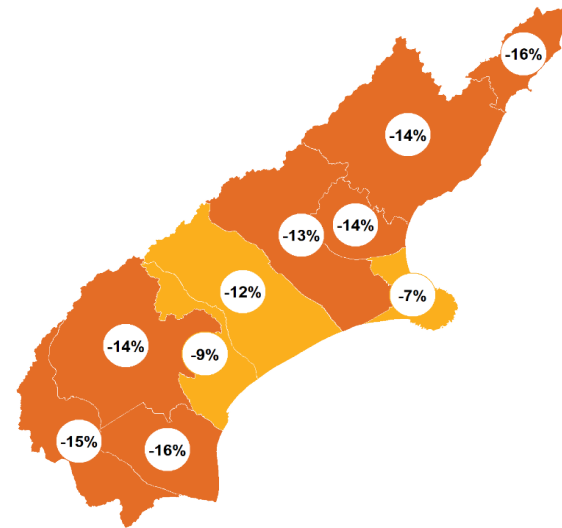
Last 5 years
2014–19



SHALLOW DECLINE
REGIONALLY



LITTLE OR NO CHANGE
NATIONALLY

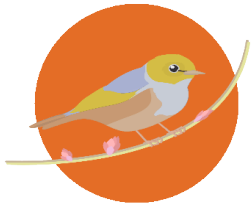


CANTERBURY | Silvereye | Tauhou

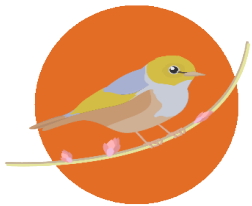
How have garden bird counts changed in this region?



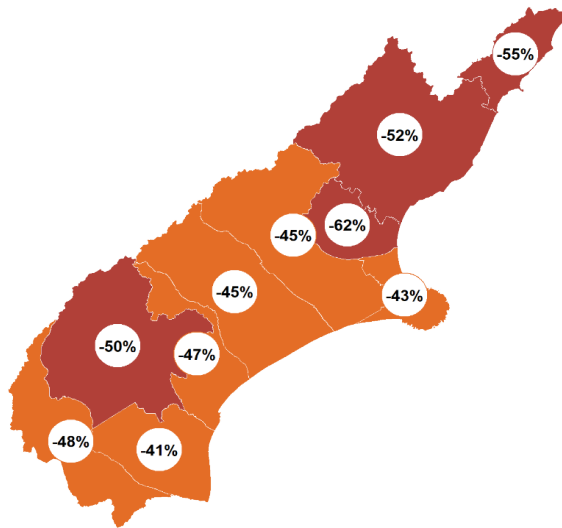
Last 10 years
2009–19



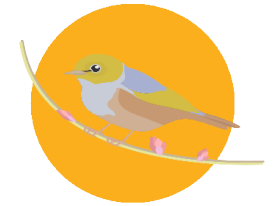
**MODERATE DECLINE
REGIONALLY**



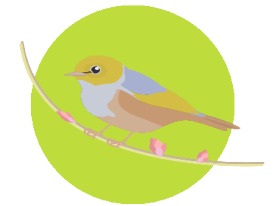
**MODERATE DECLINE
NATIONALLY**



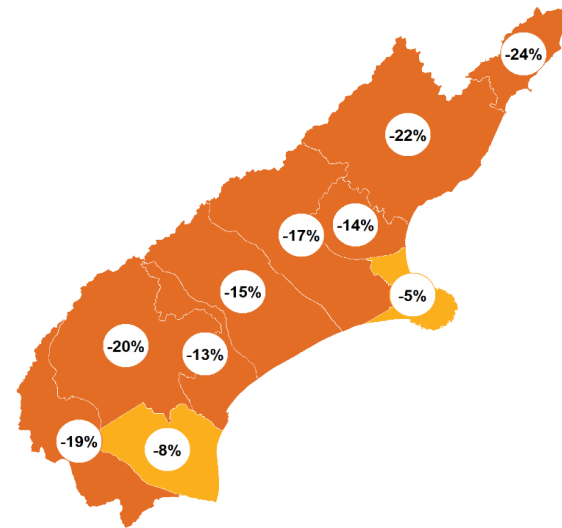
Last 5 years
2014–19



**SHALLOW DECLINE
REGIONALLY**



**LITTLE OR NO CHANGE
NATIONALLY**



- | | |
|-----------------------|--------------------|
| ■ Rapid increase | ■ Shallow decline |
| ■ Moderate increase | ■ Moderate decline |
| ■ Shallow increase | ■ Rapid decline |
| ■ No or little change | |



New Zealand
**GARDEN
BIRD
SURVEY**

2020
27 June to 5 July

Visit our webpage to learn more:
gardenbirdssurvey.landcareresearch.co.nz

This report should be cited as: Brandt AJ, MacLeod CJ, Howard S, Gormley AM, Spurr EB. 2020.
State of NZ Garden Birds 2019 | Te Āhua o ngā Manu o te Kāri i Aotearoa.
Manaaki Whenua – Landcare Research, Lincoln. ISBN 978-0-947525-67-5.



**Manaaki
Whenua**
Landcare
Research